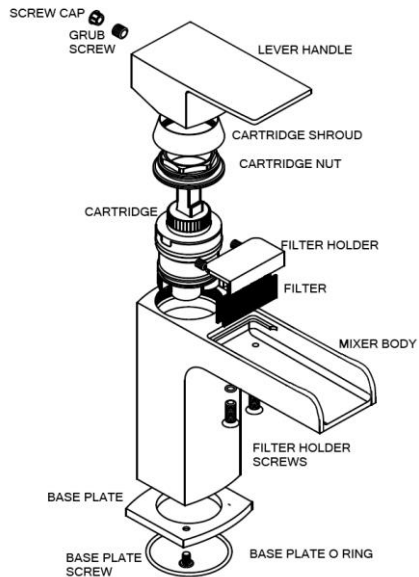
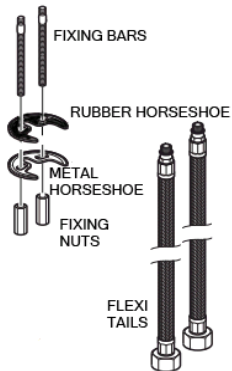


## Parts and Specification



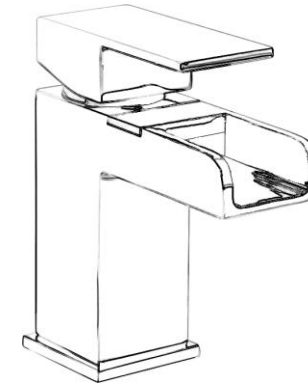
Part	Number
Screw cap	P0001-11
Grub screw	P0002-11
Lever	P0008-9
Shroud	P0051-1
Cartridge nut	P0052-1
Filter holder	P0057-1
Filter	P0058-1
Cartridge	P0014-2
Filter screws	P0059-1
Base plate	P0054-1
Base plate o ring	P0055-1
Fixing bars	P0056-1
Rubber horseshoe	P0056-3
Metal horseshoe	P0056-4
Fixing nuts	P0056-2
M10-1/2" Flexi-tails	P0049-2

Min Pressure	1.0 bar
Max Pressure	3.0 bar



# Quadra

Single Lever Mono Basin Mixer



Please retain this manual after installation for future reference and maintenance.

**Product must be installed in compliance with relevant Water Regulations Byelaws**

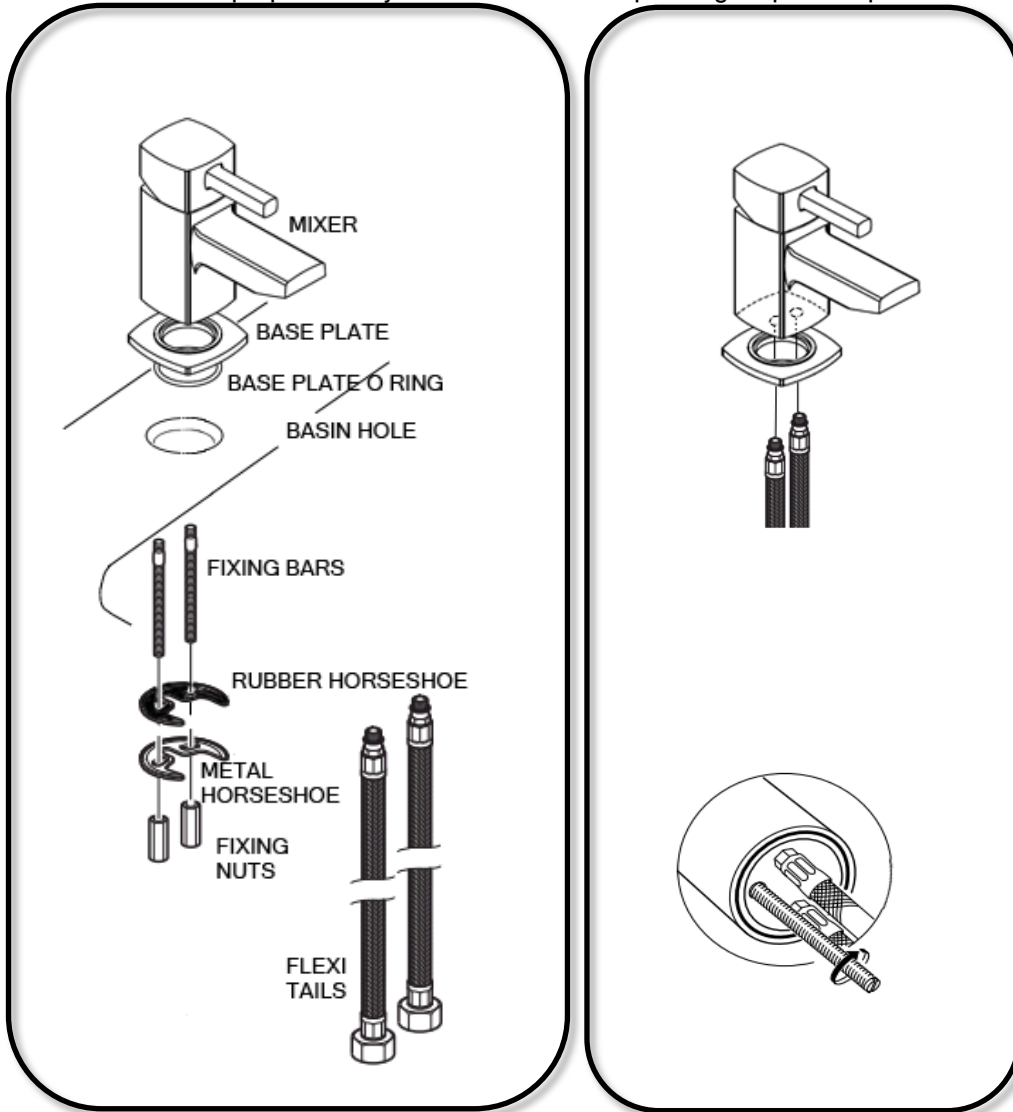


### **IMPORTANT**

- Turn off water supply prior to installation
- Always flush the pipes prior to installation
- Check for leaks following installation
- Do not overtighten tails
- Do not use PTFE
- Hot supply must be connected to the left and cold to the right

Telephone  
**0844 484 7678**

For illustration purposes only - mixer will differ depending on product purchased



**Cleaning**

All chrome surfaces should be cleaned using a clean damp cloth.  
No abrasive cleaning agents or materials should be used.

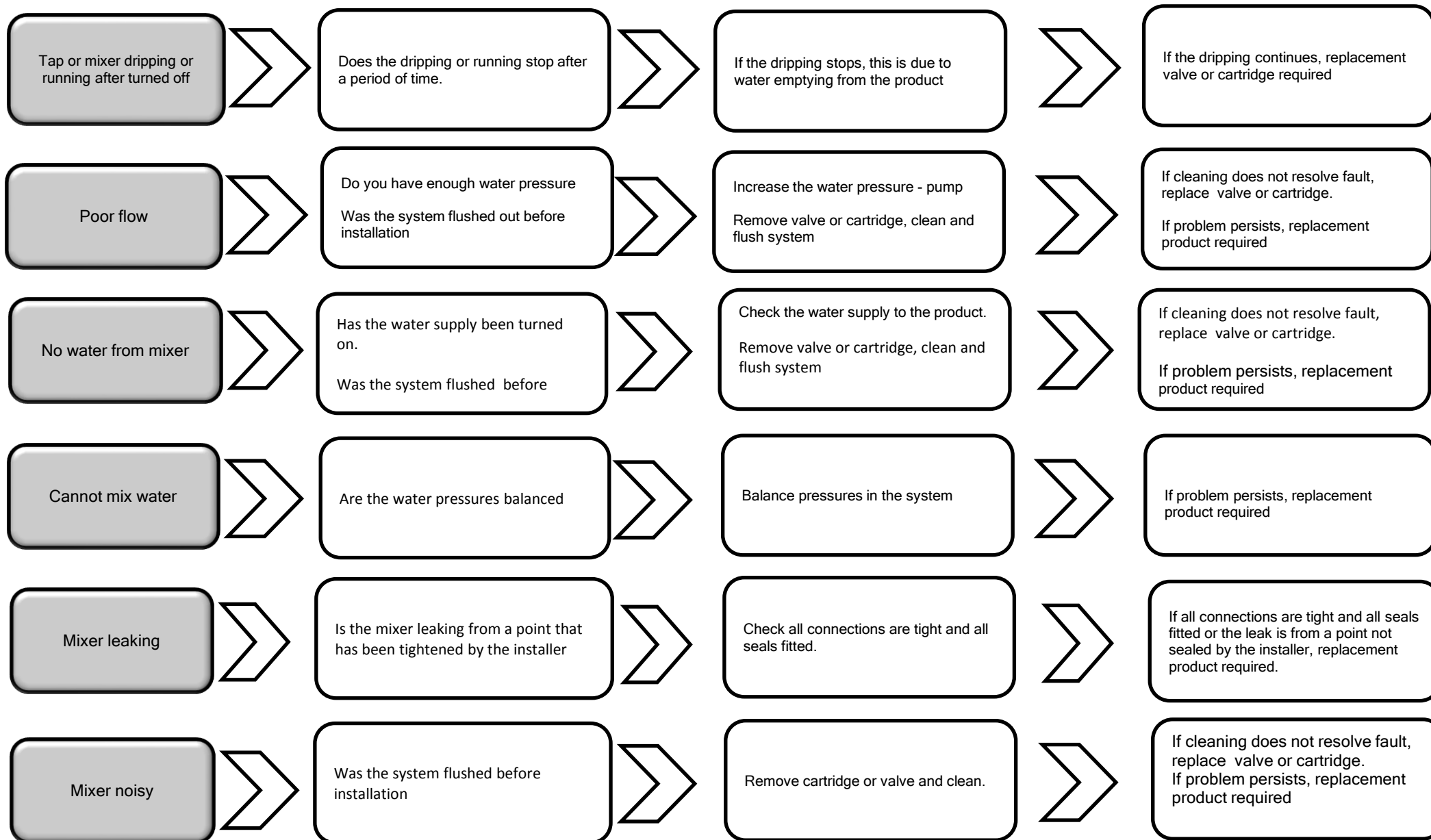
**Installation**

**Pressures should be balanced**

- > Fit the flexi-tails to the mixer inlets, tighten by hand, using a spanner may damage the o rings.
- > Fit the threaded fixing bars to the mixer holes and tighten.  
(Depending on the product, the number of fixing bars and position may vary)
- > Push the base plate inc o ring (Inclusion will depend on range) over the tails and fixing bars.
- > Place the mixer onto the basin, with the flexi-tails and fixing bars through the hole in he basin.
- > From underneath the basin push the rubber horse shoe and metal horse shoe over the fixing bars, to the underside of the basin.
- > Fit the fixing nuts to the fixing bars and tighten up.
- > Ensuring the mixer is positioned correctly tighten the fixing nuts.
- > Connect the flexi-tails to the water supply.
- > Turn on the water supply and check for leaks.

**Maintenance**

Cleaning of the cartridge may be required, to do this remove the screw cap, followed by the grub screw using an allen key, then pull off the lever. Unscrew the cartridge shroud and spanner off the cartridge nut. Pull out the cartridge and run under warm water, washing out the inside of the cartridge, then re-fit.



# Guarantee

Your product comes with a 1 year guarantee when installed, used and cleaned in accordance with this manual.

## **Not covered by the guarantee is:**

- Breakdown due to -
  - a) Use other than domestic
  - b) Wilful act of neglect
  - c) Any malfunction resulting from incorrect use
  - d) Incorrect setting of controls
  - e) Any malfunction resulting from poor water quality
- Repair costs for damage caused by foreign objects or substances
- Total loss of the product due to non-availability of parts
- Compensation for loss of use of the product or consequential loss of any kind.
- Call out charges where no fault has been found with the product.

Your product comes with a 1 year guarantee when installed, used and cleaned in accordance with this manual.

## **Not covered by the guarantee is:**

- The cost of repair or replacement of pressure relief devices, spray heads, hoses, riser rails and/or wall bracket or any other accessories installed at the same time.
- The cost of routine maintenance, adjustments, overhaul, modifications, loss or damage, arising therefrom, including the cost of repairing damage, breakdown, malfunction caused by corrosion, furring, pipe scaling, lime scale, system debris or frost.







