

Product Specification

Slide Rail/Riser Kit

Length of shower hose: 1.5 metres

Length of slide rail kit: 1220mm Max - 870mm Min

Easy clean rubber nozzles on shower handset

Number of functions on handset: 1

Pressure Requirements: minimum 1.0 bar

Materials Specification: Steel with a chrome finish

Cleaning

Wipe down using a clean damp cloth, no abrasive cleaning agents or materials should be used.

Use of abrasives will invalidate your guarantee

Telephone
0844 484 7678

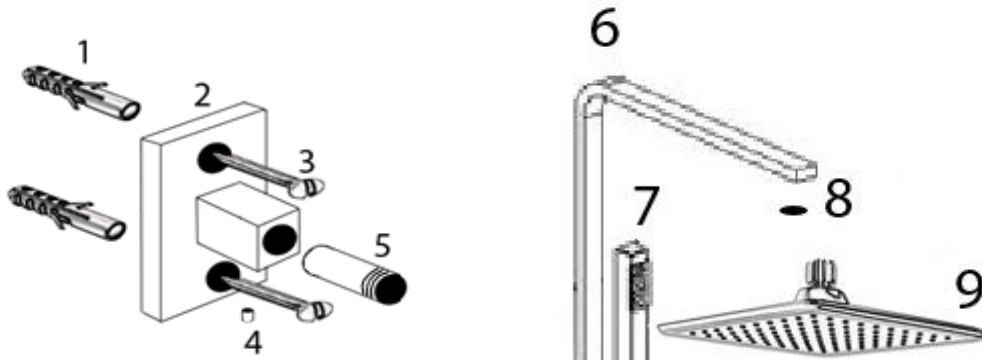
Square Riser Kit



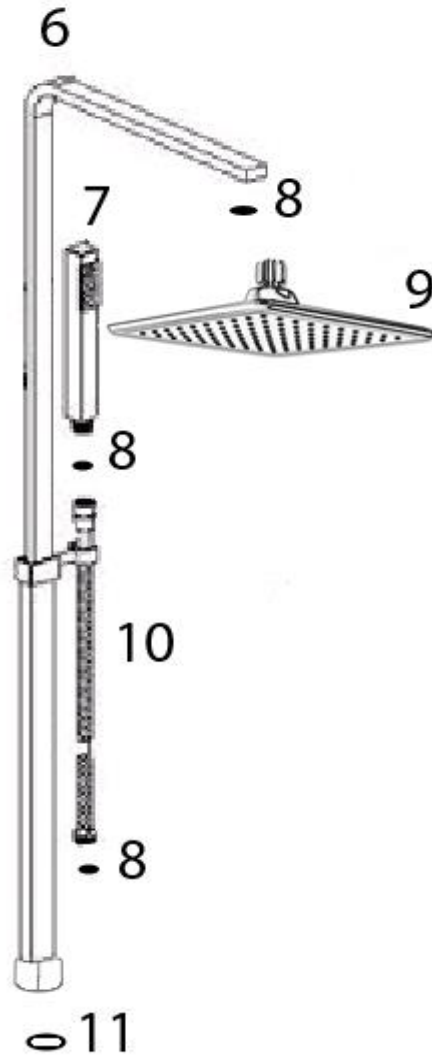
Please retain this manual after installation for future reference and maintenance.

Product must be installed in compliance with relevant Water Bylaws

Parts



Part	Description
1	Wall plug x 2
2	Wall bracket x 1
3	Wall screws x 2
4	Grub screw x 1
5	Bracket peg x 1
6	Rail x 1
7	Hand shower x 1
8	Small seals x 2
8	Small seals x 1 with head
9	Shower head (Separate)
10	Hose x 1
11	Nut seal x 1



Installation - Step 1

Before any positioning or installation takes place, hold the bottom section of the rail and pull the top section upwards.

This will expose the hole in the rear of the rail which the wall bracket connects to.

Doing this will allow for correct positioning of the mixer and shower head.

Connect the riser rail to the shower mixer.

Position this on the wall with the rail extended to the required height.

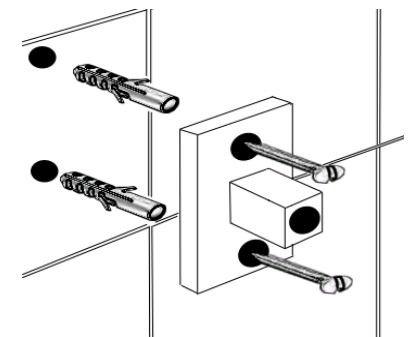
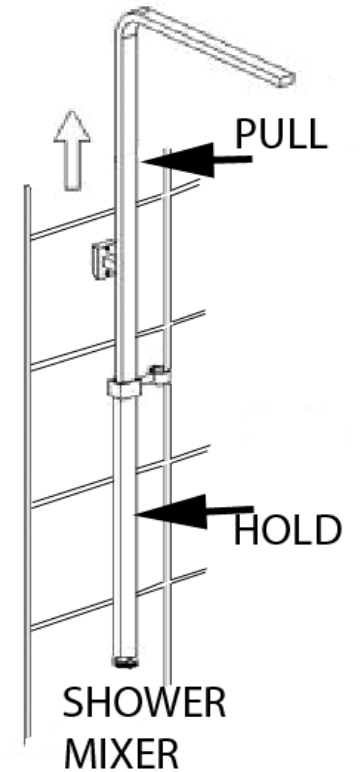
Once the correct position has been set, mark the position of the shower mixer and wall bracket on the wall.

Remove the assembly, drill holes in the wall and insert plugs.

IMPORTANT !!!

Check for wires and pipes before drilling to prevent damage.

Hold the wall bracket over the wall plugs and secure using screws provided.



Installation - Step 2

Install the mixer as per the instructions supplied with the mixer.

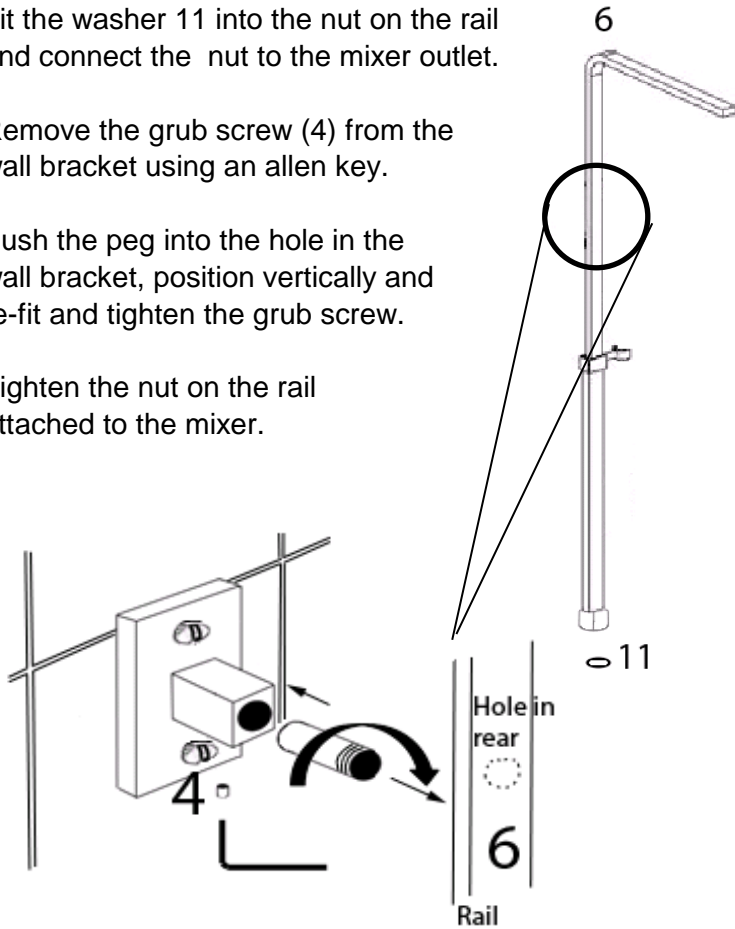
Once the wall bracket is secured to the wall, screw the wall bracket peg into the rear of the rail.

Fit the washer 11 into the nut on the rail and connect the nut to the mixer outlet.

Remove the grub screw (4) from the wall bracket using an allen key.

Push the peg into the hole in the wall bracket, position vertically and re-fit and tighten the grub screw.

Tighten the nut on the rail attached to the mixer.



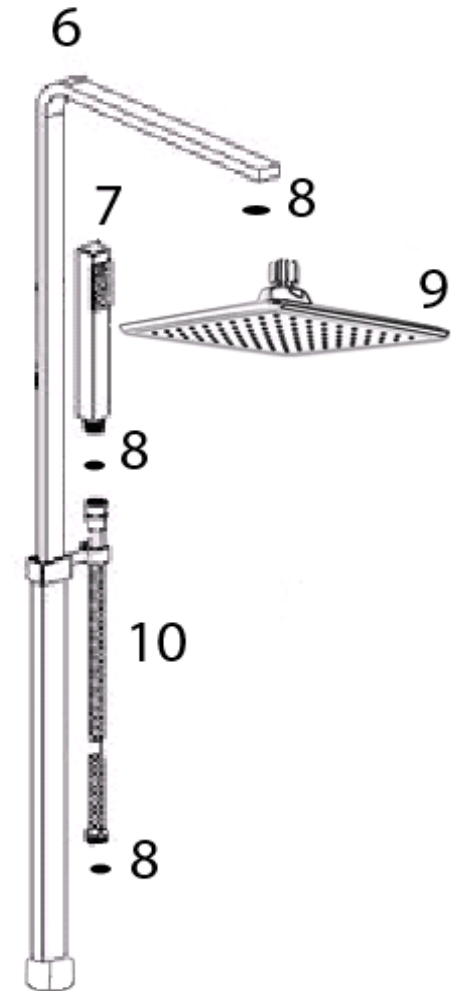
Installation - Step 3

Fit rubber seals into swivel joint on shower head and into each end of the shower hose.

Connect the cone end of the shower hose to the hand shower and the nut end to the shower mixer outlet.

Ensure all connections are tight.

Place the cone end of the hose into the holder fitted to the rail.



Guarantee

Your product comes with a 1 year guarantee when installed, used and cleaned in accordance with this manual.

Not covered by the guarantee is:

- Breakdown due to -
 - a) Use other than domestic
 - b) Wilful act of neglect
 - c) Any malfunction resulting from incorrect use
 - d) Incorrect setting of controls
 - e) Any malfunction resulting from poor water quality
- Repair costs for damage caused by foreign objects or substances
- Total loss of the product due to non-availability of parts
- Compensation for loss of use of the product or consequential loss of any kind.
- Call out charges where no fault has been found with the product.

Your product comes with a 1 year guarantee when installed, used and cleaned in accordance with this manual.

Not covered by the guarantee is:

- The cost of repair or replacement of pressure relief devices, spray heads, hoses, riser rails and/or wall bracket or any other accessories installed at the same time.
- The cost of routine maintenance, adjustments, overhaul, modifications, loss or damage, arising therefrom, including the cost of repairing damage, breakdown, malfunction caused by corrosion, furring, pipe scaling, lime scale, system debris or frost.