

Product Specification

Minimum Pressure 2.0 bar
 Maximum Pressure 3.0 bar
 Cold Temperature - 4 - 20 c
 Hot temperature 55 - 85 c
 1/2" bsp female end flexi-connectors
 Single function rub clean hand shower
 Single function rub clean shower head
 Single function rub clean body jets
 38c Temperature stop position
 Minimum 10c difference between hot supply and mixed outlet temperature
 In-coming pressures should be balanced



Important

When drilling check wires and pipes will not be damaged
 Before installation fully flush the system to remove debris
 Hot supply must be on left and cold supply on right

Cleaning

All surfaces should be cleaned using a clean damp cloth.
 No abrasive cleaning agents or materials should be used.

Telephone
0844 484 7678

Catalina Shower Panel

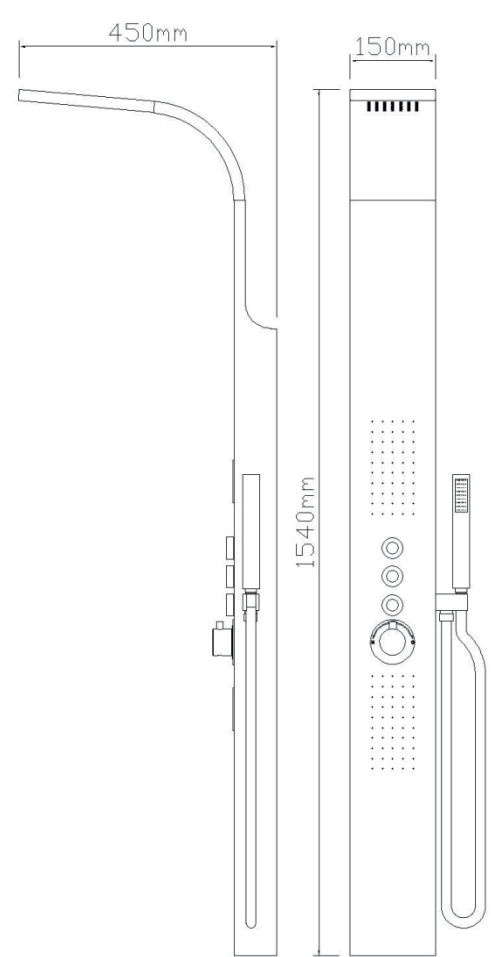
11308-11309



Please retain this manual after installation for future reference and maintenance.

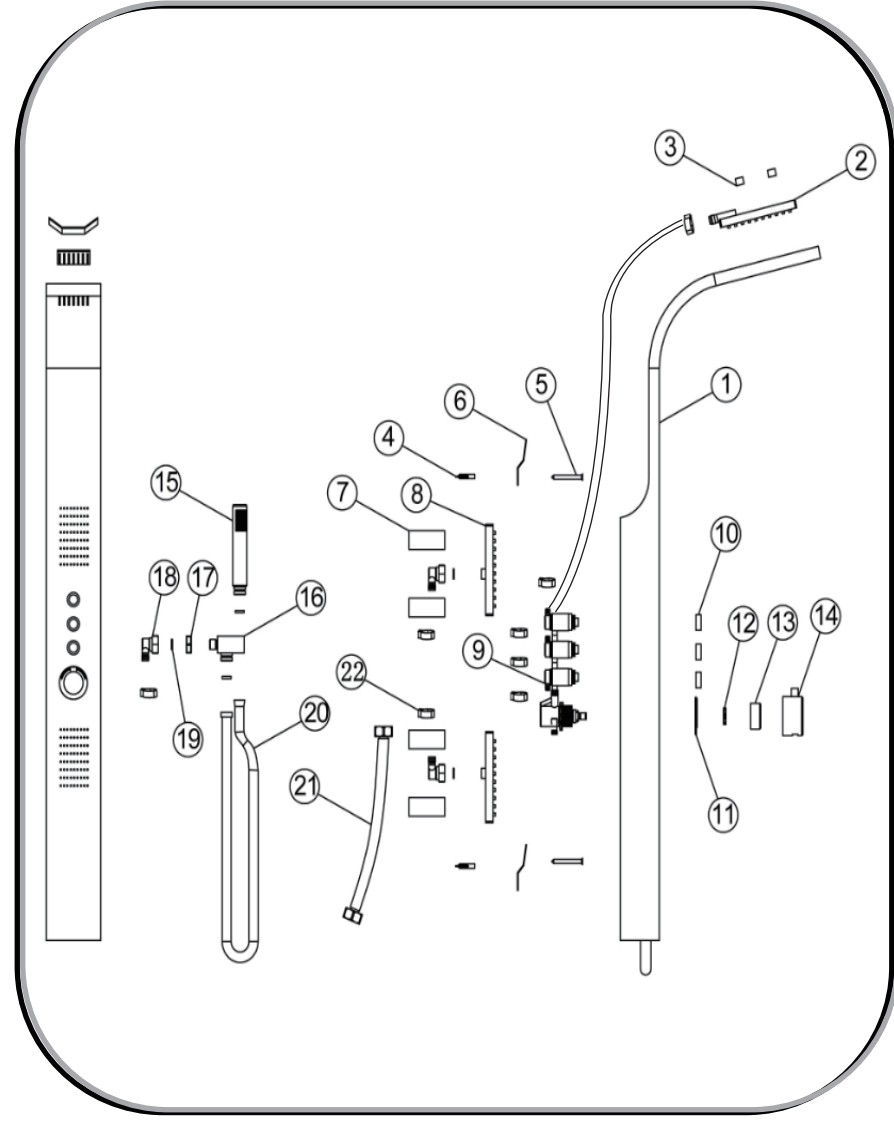
Product must be installed in compliance with relevant Water Regulations and Byelaws

Dimensions



1

Parts



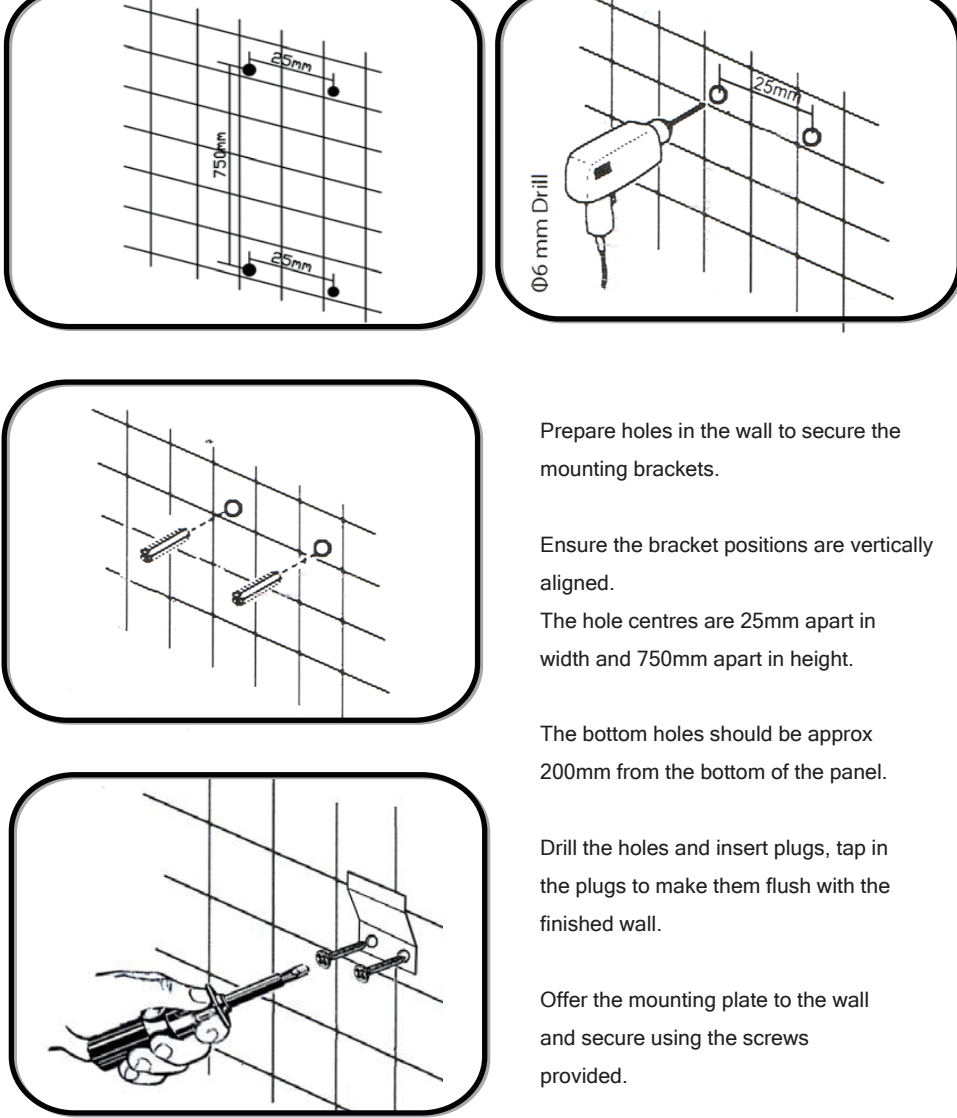
2

Installation

Part No.	Description	Qty
1	Shower panel body	1
2	Top shower	1
3	Fastener	2
4	Wall plug	4
5	Wall screws ST4.5x48	4
6	Wall bracket	2
7	Body jet fastener	4
8	Body jets	2
9	Thermostat	1
10	Push button	3
11	Thermostat cover	1
12	Thermostat fastener	1
13	Thermostat positioner	1
14	Thermostat Handle	1
15	Handset	1
16	Handset bracket	1
17	G1/2" Connector	1
18	Elbow	3
19	Washer 18*3	3
20	Shower hose	1
21	flexi tails	2
22	clip	8

3

Installation

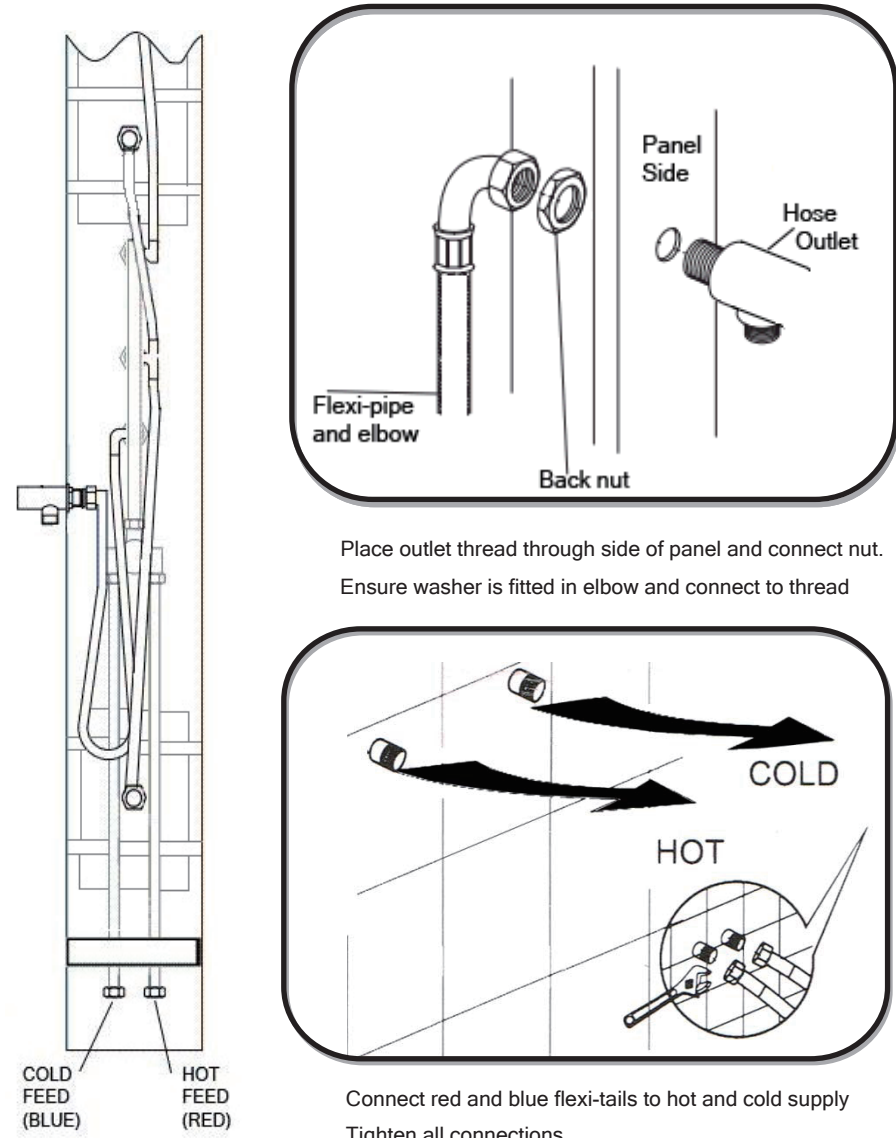


Prepare holes in the wall to secure the mounting brackets.
 Ensure the bracket positions are vertically aligned.
 The hole centres are 25mm apart in width and 750mm apart in height.
 The bottom holes should be approx 200mm from the bottom of the panel.

Drill the holes and insert plugs, tap in the plugs to make them flush with the finished wall.
 Offer the mounting plate to the wall and secure using the screws provided.

4

Installation

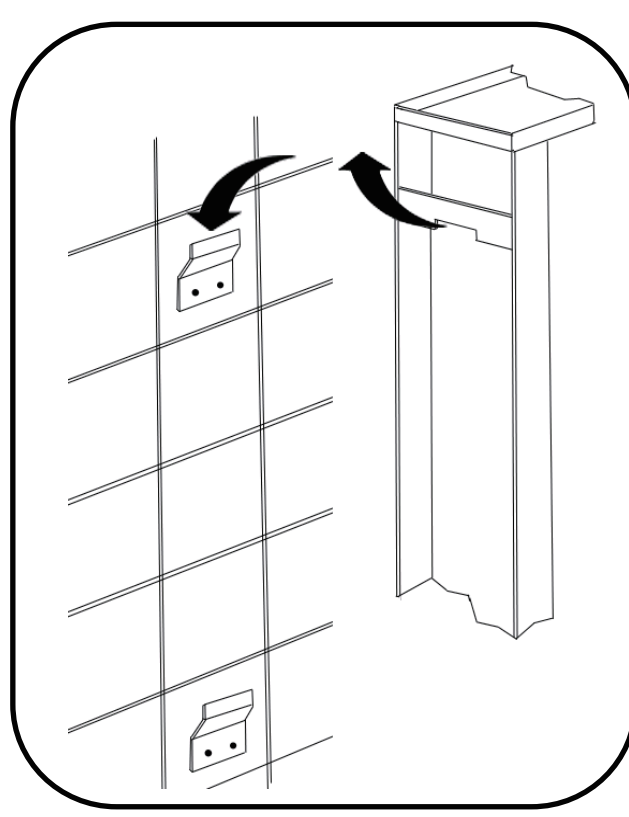


Place outlet thread through side of panel and connect nut. Ensure washer is fitted in elbow and connect to thread

Connect red and blue flexi-tails to hot and cold supply
 Tighten all connections

5

Installation



Once all of the pipe connections have been made and checked for leaks.

Hook the panel over the wall mounting brackets.

Align so that the panel hangs vertically.

The panel can be sealed down each edge if required.

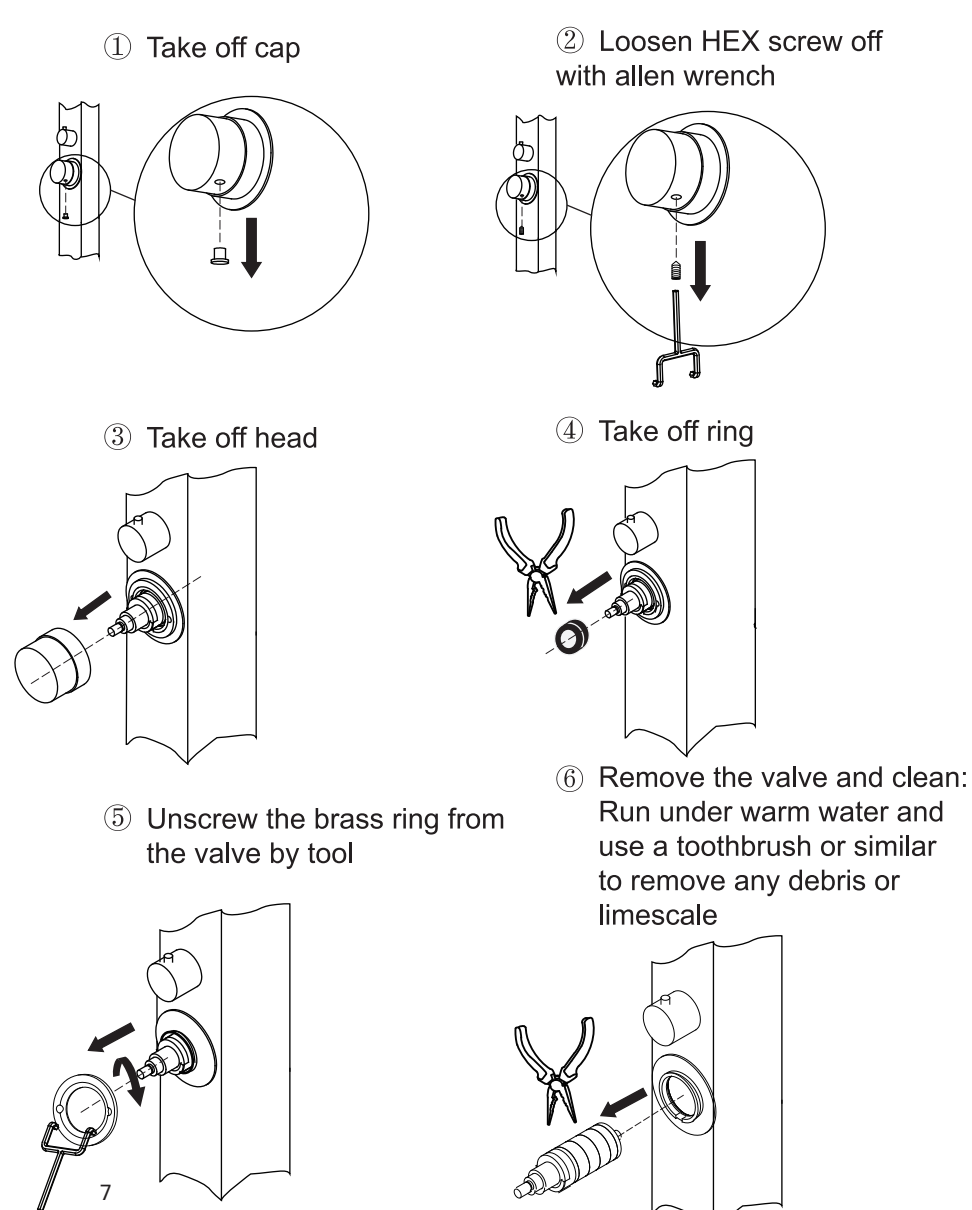
6



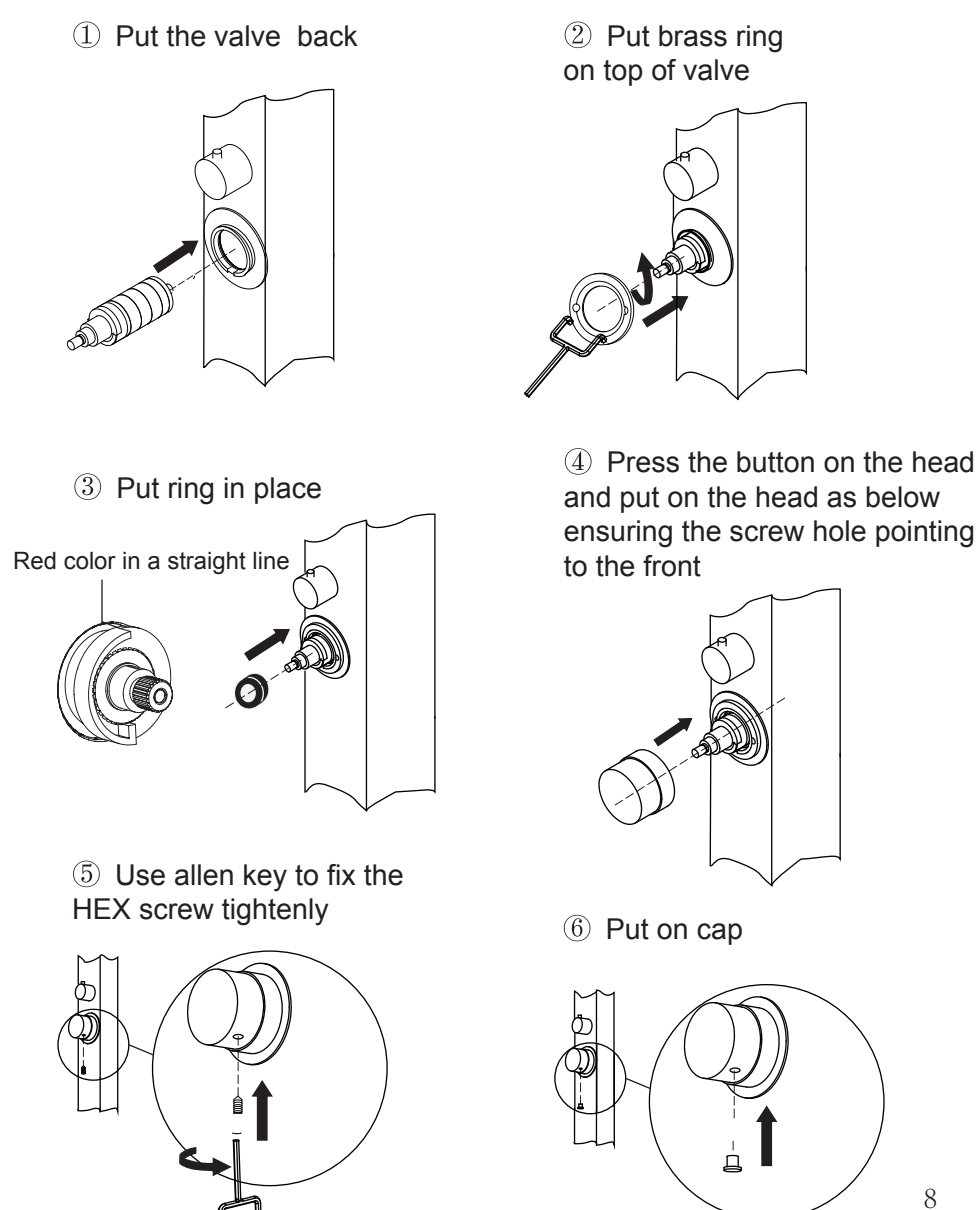
NOTE: PLEASE CARRY OUT THE FOLLOWING STEPS IF CLEANING /MAINTENANCE IS REQUIRED

Thermostatic valve removal and installation

Removal process



Installation process



Guarantee

Not covered by the guarantee is:

- Breakdown due to -
 - a) Use other than domestic
 - b) Willful act of neglect
 - c) Any malfunction resulting from incorrect use
 - d) Incorrect setting of controls
 - e) Any malfunction resulting from poor water quality
- Repair costs for damage caused by foreign objects or substances
- Total loss of the product due to non-availability of parts
- Compensation for loss of use of the product or consequential loss of any kind.
- Call out charges where no fault has been found with the product.

9

Not covered by the guarantee is:

- The cost of repair or replacement of pressure relief devices, spray heads, hoses, riser rails and/or wall bracket or any other accessories installed at the same time.
- The cost of routine maintenance, adjustments, overhaul, modifications, loss or damage, arising therefrom, including the cost of repairing damage, breakdown, malfunction caused by corrosion, furring, pipe scaling, lime scale, system debris or frost.

10