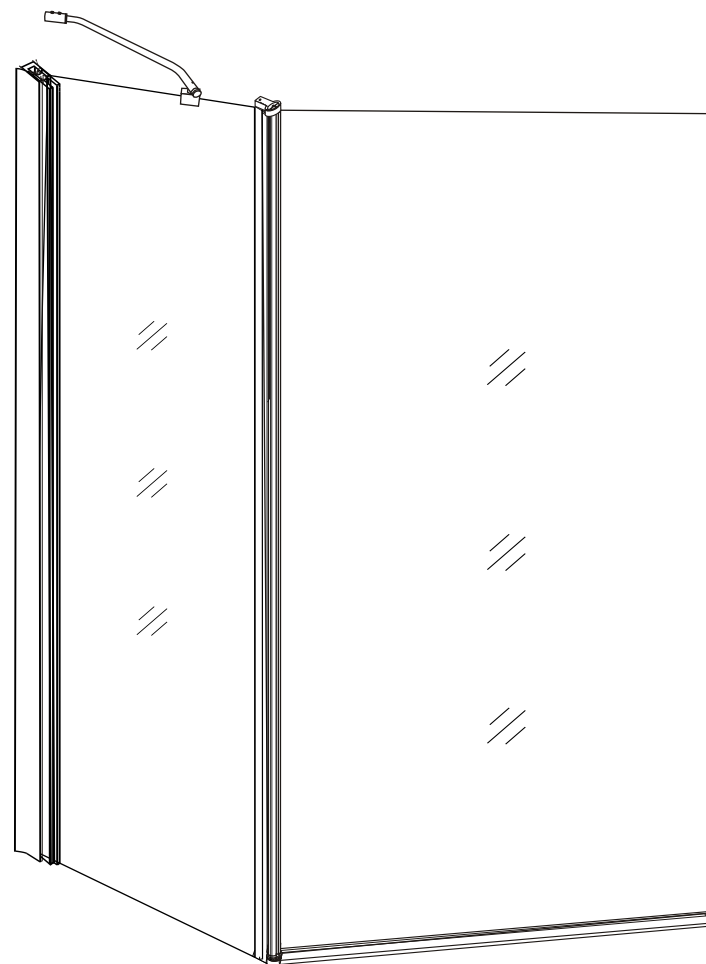


Installation Operation Manual

13272



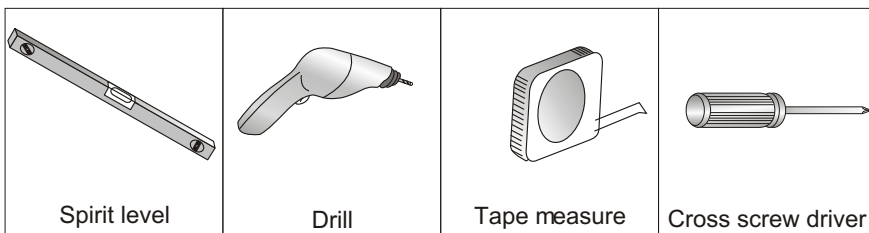
Important Reminder

- 1.This may require two people for installation.
- 2.Please install the shower enclosure according to the instruction strictly, otherwise, it will affect the operational performance.
- 3.After opening the carton, please check the parts according to the part list.
- 4.Please handle the glass parts carefully, don't knock on the glass to avoid damage.
- 5.After installation completely, do not use for at least 24hours.

Notice

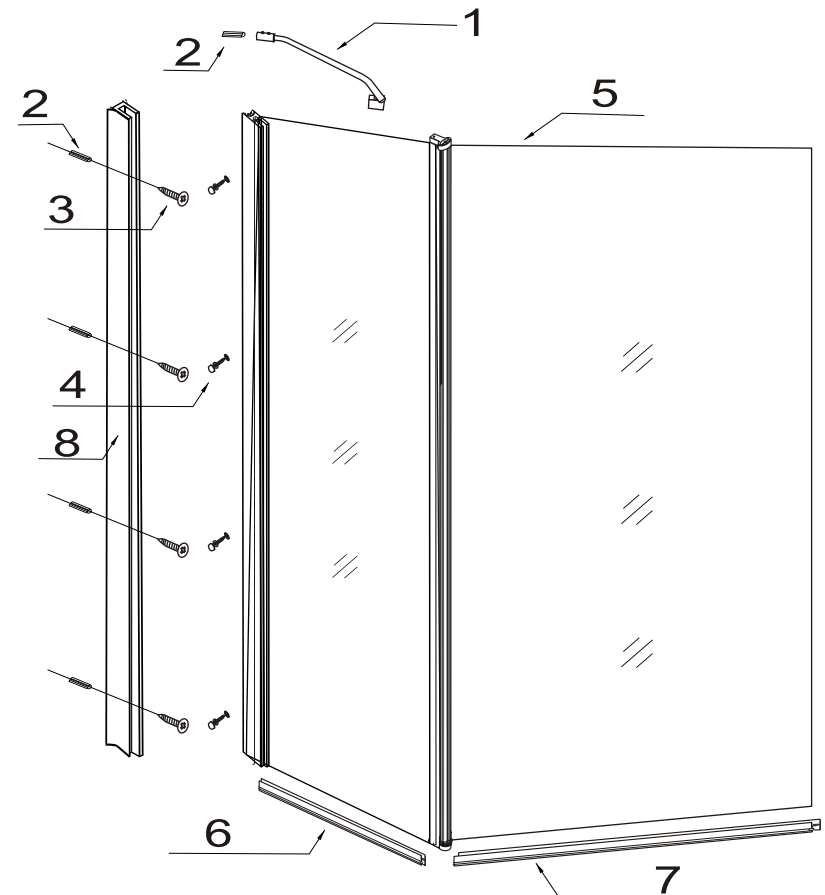
- 1.Do not climb or hang heavy things on the shower enclosure.
- 3.Do not knock and impact the glass .
- 4.Caution slippery on the inside of the shower enclosure.
- 5.Ordinary liquid detergent should be used with a soft cloth for cleaning.
- 6.Apply silicone to prevent water leakage.

Tools:



Structure sketch map:

Parts drawing:

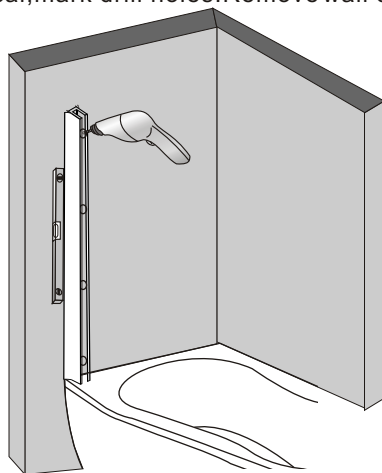


1.Bracing bar	x1	2.Plastic plug	x5
3.ST4X25 screw	x4	4.ST4X12 screw and screw cups	x4
5.Glass screen	x1	6."U" type seal	x1
7."H" type seal	x1	8.Wall profile	x1

Installation Step

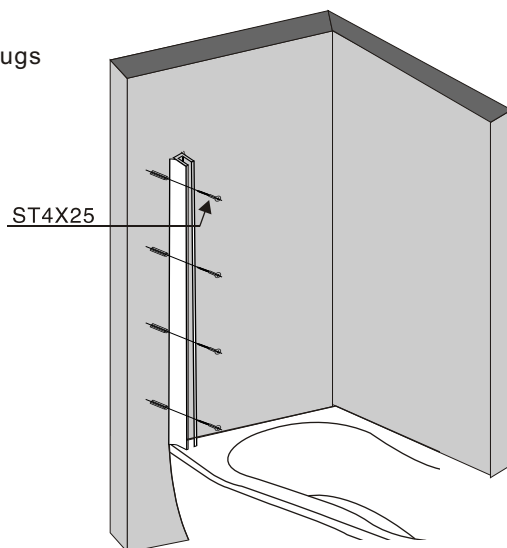
STEP 1:

Position the wall channel onto the bath approx 10-15mm in from the front edge of the bath ledge.
Ensure no pipes or wires will be damaged by the drilling
Ensure this is vertical, mark drill holes. Remove wall channel and drill holes.



STEP 2:

Insert wall plugs

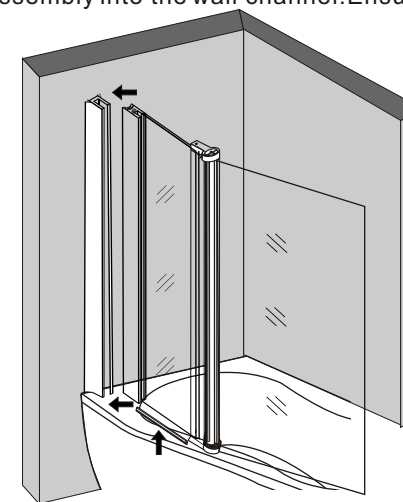


Position wall channel over holes. sealant can be applied between the channel and the wall.
Fit screws and secure wall channel.

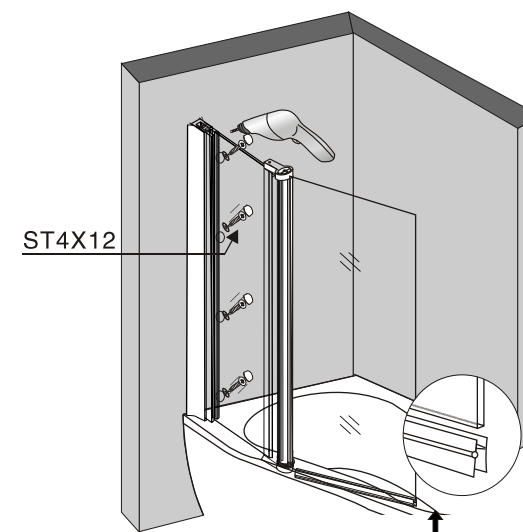
Installation Step

STEP 3:

Cut the U type seal to be correct size and then insert the U type seal to the bottom of the fixed glass. Push the screen.
Push the screen assembly into the wall channel. Ensure that this is made vertical.



STEP 4:

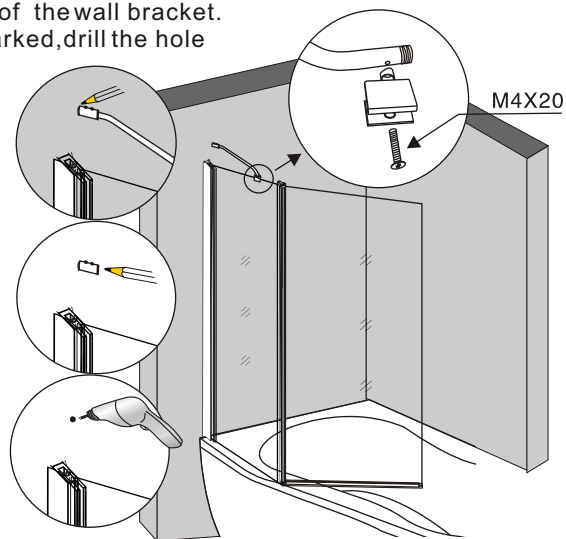


Drilling through from the inside through the wall channel and glass profile a 3.2mm drill bit.
Do not drill through to the outside edge.
Fit screws, cups and covers to secure the screen.
Push on the seal to the bottom of the pivot screen.

Installation Step

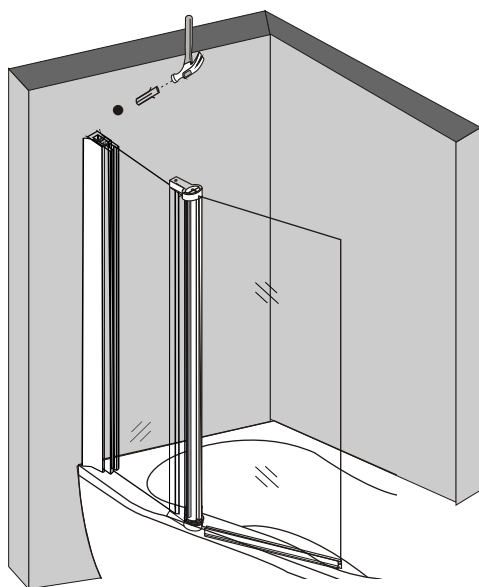
STEP 5:

Place the bracing arm onto the screen and against the wall and mark the position of the wall bracket. Once marked, drill the hole



STEP 6:

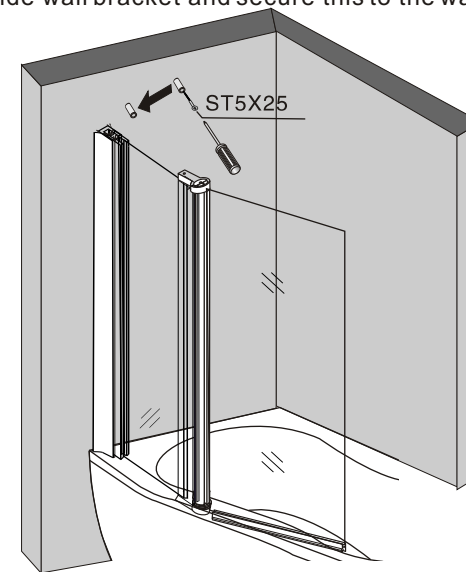
After drilling insert wall plug.



Installation Step

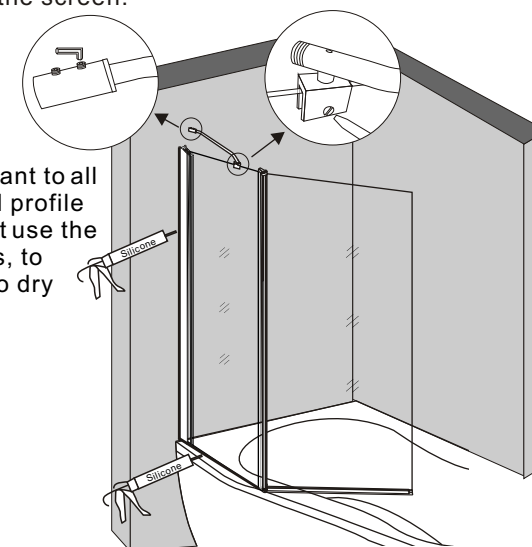
STEP 7:

Insert screw inside wall bracket and secure this to the wall



STEP 8:

Place the arm inside the wall bracket and onto the screen. Tighten the grub screw in the wall bracket and tighten the screen bracket screw to secure to the screen.



Apply silicone sealant to all joints between wall profile and bathtub, do not use the screen for 24 hours, to allow the silicone to dry completely.

Installation Step

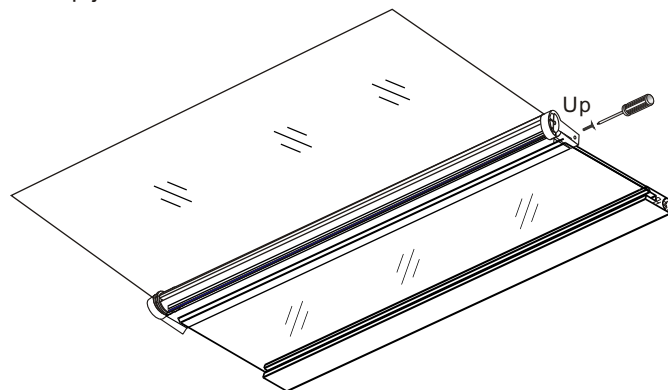
Joint changing:

The default direction of this screen is LH. To change it to RH.

1. Unscrew the top joint

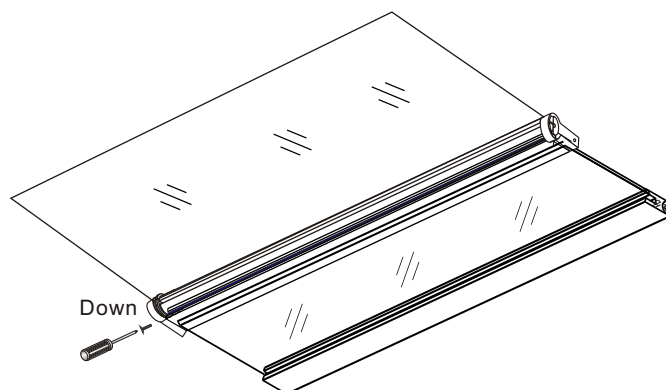
STEP 1:

Unscrew the top joint



STEP 2:

Unscrew the bottom joint



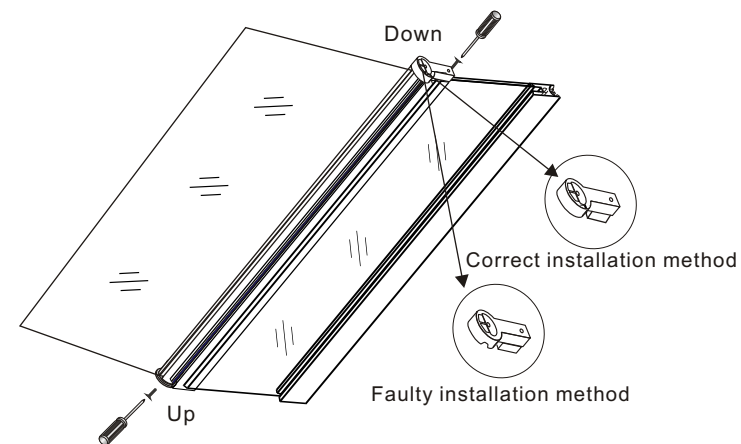
Installation Step

STEP 3:

Exchange the two joints

Screw up the joints on both sides

Then the screen could be installed at the right-hand side.



STEP 4:

