

Before Installation

- *** Please install the shower enclosure according to the instruction strictly, otherwise, it will affect the operational performance.
- *** After opening the carton, please check the parts according to the part list.
- *** Please handle the glass parts carefully, don't knock on the glass to avoid damage.

Reminder and Maintenance

- *** Do not climb or hang heavy things on the shower enclosure.
- *** Caution slippery on the inside of the shower enclosure.
- *** Keep the tray clean, avoid hair and sundries to jam the drain.
- *** All chrome surfaces should be cleaned using a clean damp cloth.
- *** No abrasive cleaning agents or materials should be used.
- *** General glass cleaner can be used for the screen, but ensure that this will not damage the chrome, check the cleaning information on the product before use

This instruction will cover installation of the following units

Codes: 13335 13336

Adjustment:

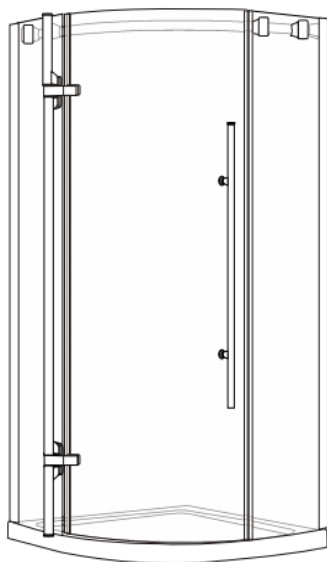
13335:	870-880mm	900mm Alora Quad
13336:	770-780mm	800mm Alora Quad

Telephone

0844 484 7678

Alora Quadrant Shower Enclosure

Instructions



Images are for installation purposes only

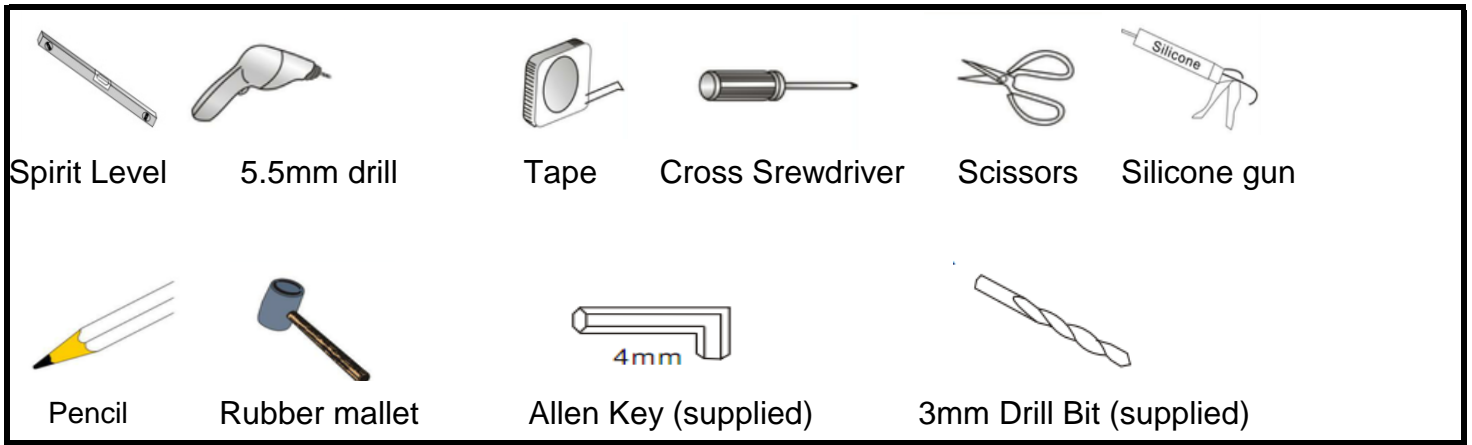
Please retain this manual after installation for future reference and maintenance

Product must be installed in compliance with relevant Water Bylaws

Importance

- *** Handle with care, impact can damage both the glass and frame
- *** Check for pipes and wires prior to installation
- *** Use of safety equipment is advised
- *** Two people are required for part of the installation

TOOLS REQUIRED



Parts List

Item	Description	Qty	Remark
A	Supporting bar kit	1	Screws assembled
A1	Wall fixing plate	2	
A2	Plate cover	2	
B	Screws	8	ST4x25 to suit wall profile
C	Flathead screws	2	ST4x25 to suit M on tray
D	Flathead screws	2	ST4x35 to suit M on floor
E	Wall plug(6mm)	10	6mm
F	Screws	4	M4x10 to suit A2
G	Door panel glass	1	
H	Large fixed glass	1	with glass profile
I	Small fixed glass	1	with glass profile
J	Wall profile	2	
K	Rubber seal	1	at the bottom of door panel
L	Magnetic seal	2	
M	Glass Clip	2	
N	Screws	2	ST5X10
O	Chrome strip	1	
P	Shower Tray	1	Not supplied
S	Screw cover cap	2	to suit C or D
T	Rubber Seal	1	
U	Screws pack	8	ST4X10 incl. washer & cap
V	Handle	1	Scews assembled
W	Hinge post	1	Scews assembled
X	Wall plug(8mm)	2	8mm to suit Y
Y	Screws	2	ST5X35 to suit A1 to wall



Parts Drawing

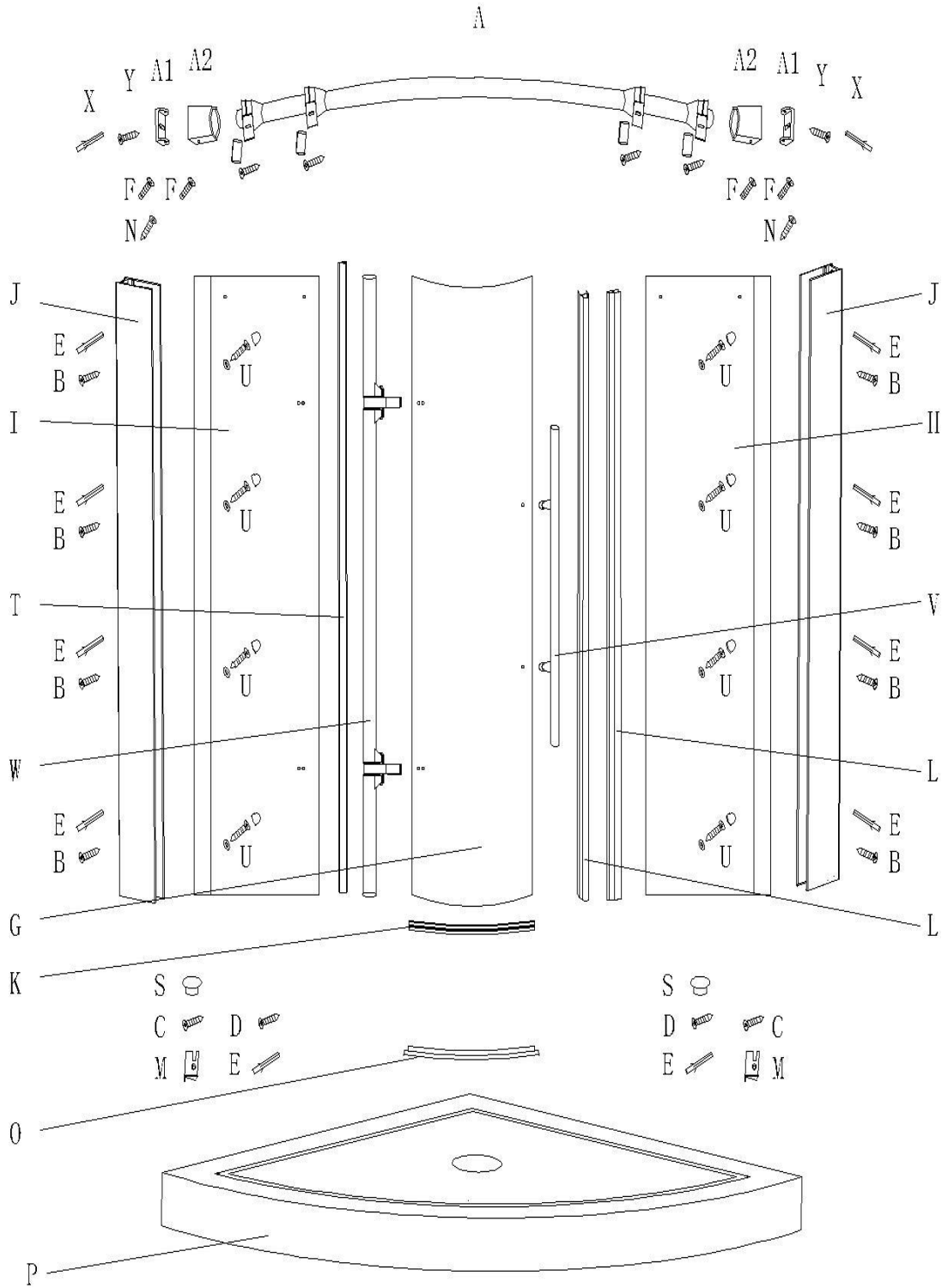


Figure 1

Installation Guide

Step 1

- *** Connect the waste pipe(not supplied) from the shower tray into the floor
- *** Fit the shower tray(available separately) in the required position.
- *** If the shower enclosure is not being installed on a shower tray, please choose a suitable flooring type to fit the enclosure to.

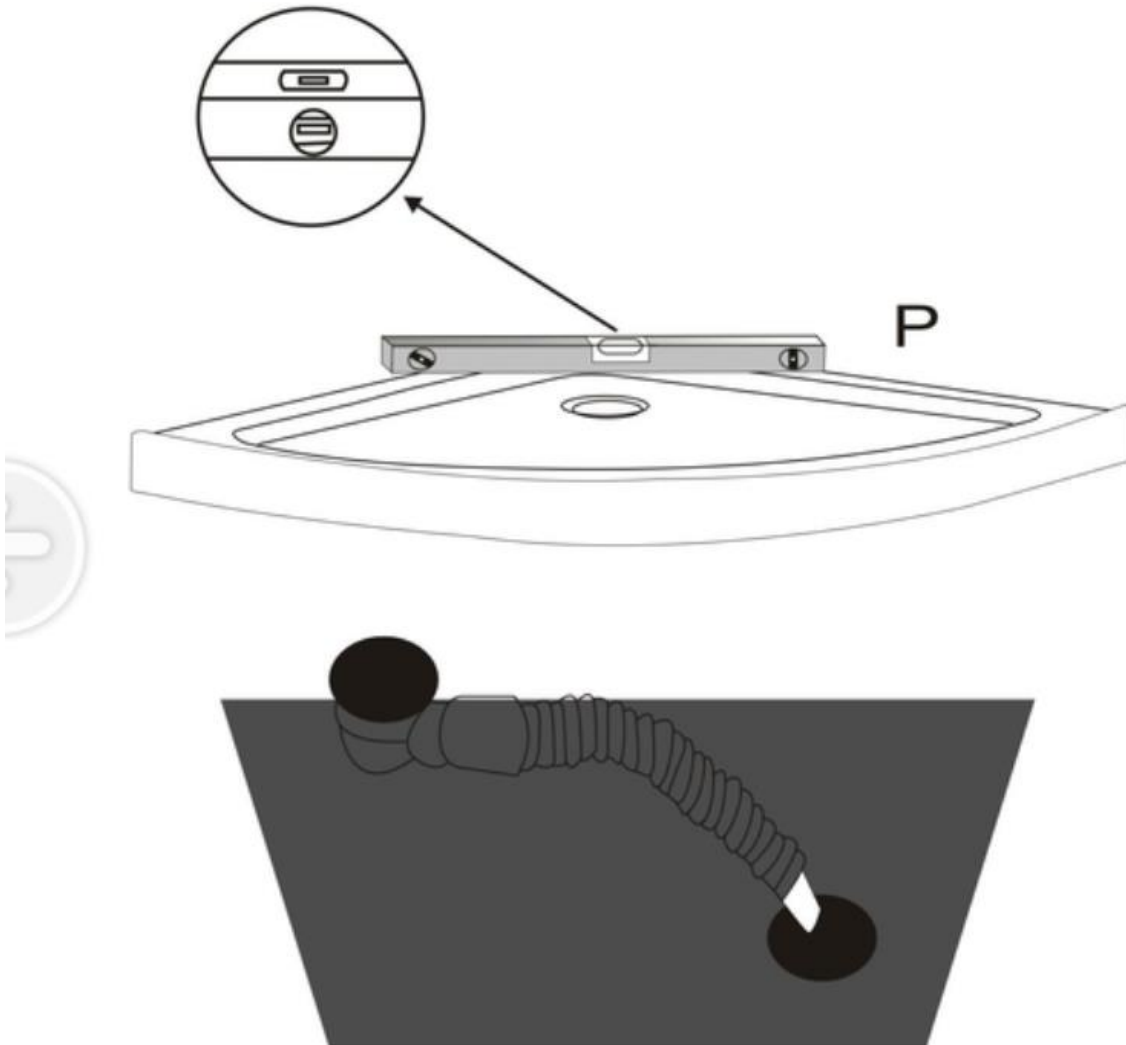


Figure 2

Step 2

- * Place the wall profiles 10-20mm in from the edge of the tray and mark the positions on the wall with a pencil
- * Position the wall profiles(J) against these markings and use a spirit level to ensure they are vertical
- * Using the wall profiles as a template, marking the positions through the holes onto the wall
- * Drill holes using a 5.5mm drill bit.
- * Using a rubber mallet to insert the wall plugs(E) into the holes.
- * Fix the wall profiles(J) with screws ST4x25mm(B)

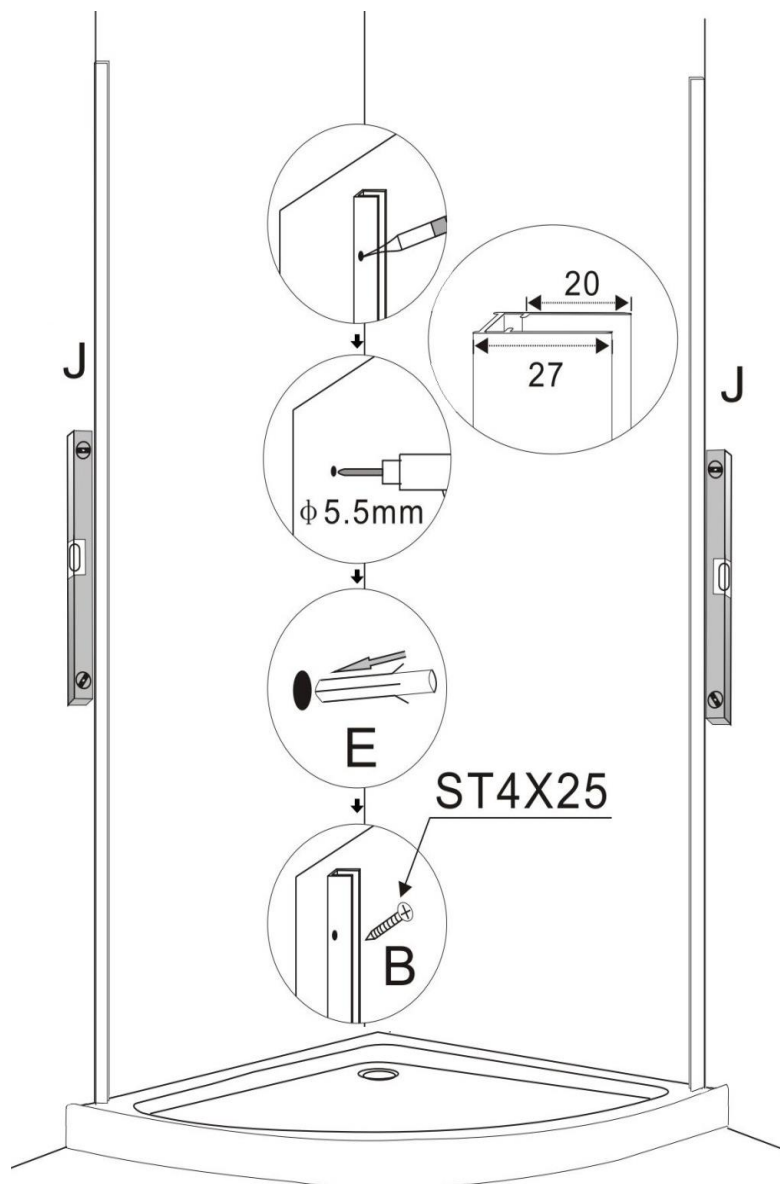


Figure 3

Step 3

* Insert the large fixed glass panel(H) into wall profiles(J), make sure the fixed glass panels are vertical.

* Adjust the fix glass panel to proper position, don't fix the fixed glass profile and wall profile at this moment.

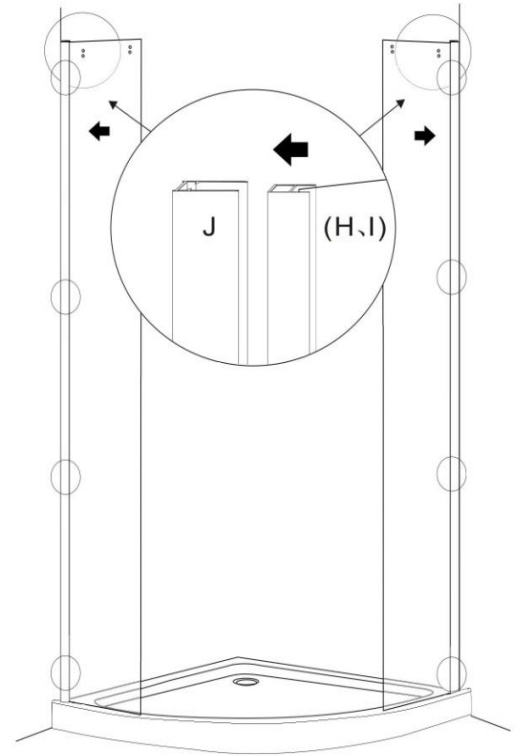


Figure 4

Step 4

4.1

* Unscrew the screw ST5x60 and dis-assemble parts from the supporting bar kit(A)

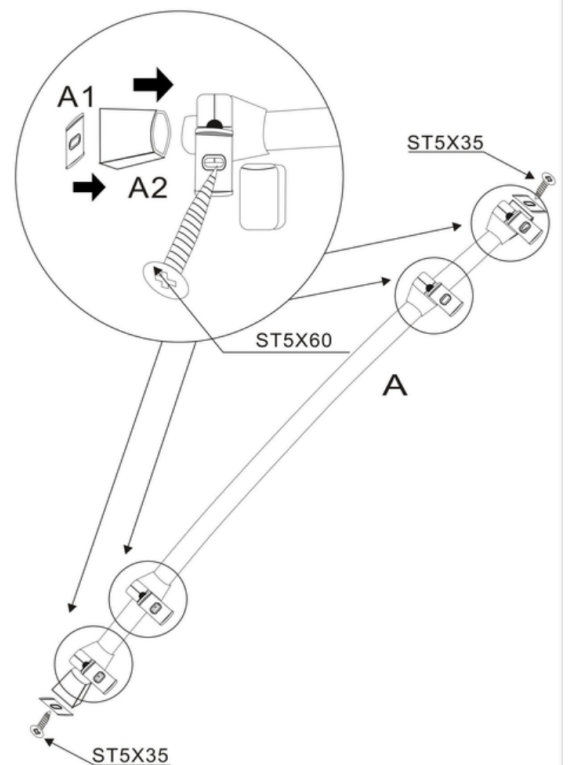


Figure 5

4.2

- * Position the supporting bar kit(A) to the wall
- * Line up the holes on the bar and the holes on the fixed glass panels;
- * Marking around the plate cover(A2), see 1 and 2 on the figure
- * Take out the bar and keep A2 on the wall and mark through the hole on wall fixing plate(A1) into the wall, see 3 and 4 on the figure
- * Drill a hole on the wall and push wall plug(X) into the wall, see 5 and 6 on the figure
- * Put the wall fixing plate(A1) on the wall and screw in the screws ST5x35(Y) and position plate cover (with supporting bar) to wall fixing plate, see 7 and 8
- * This carries out for both ends to walls

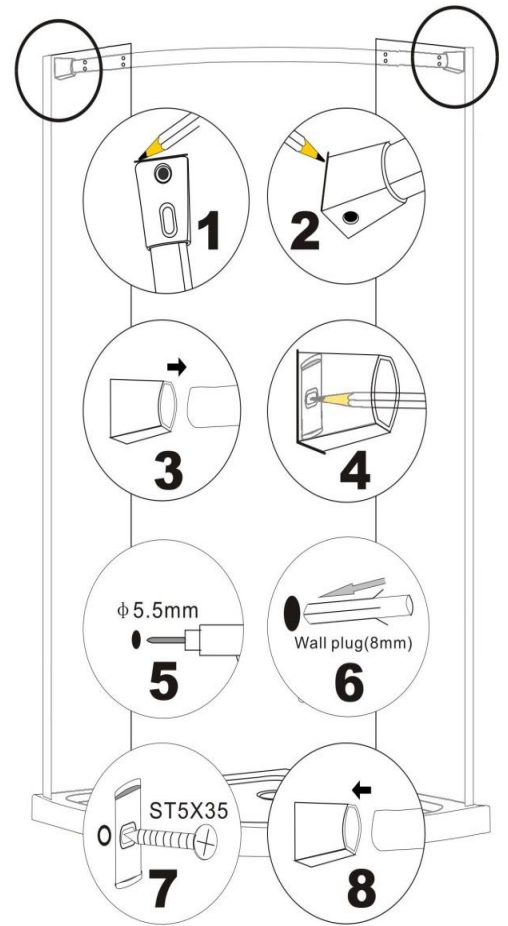


Figure 6

4.3

- * Use screwdriver to fasten the screws M4x10(F) from both top and bottom on both plate covers(A2)

Please ensure the holes on the supporting bars and fixed glass panels are lined up

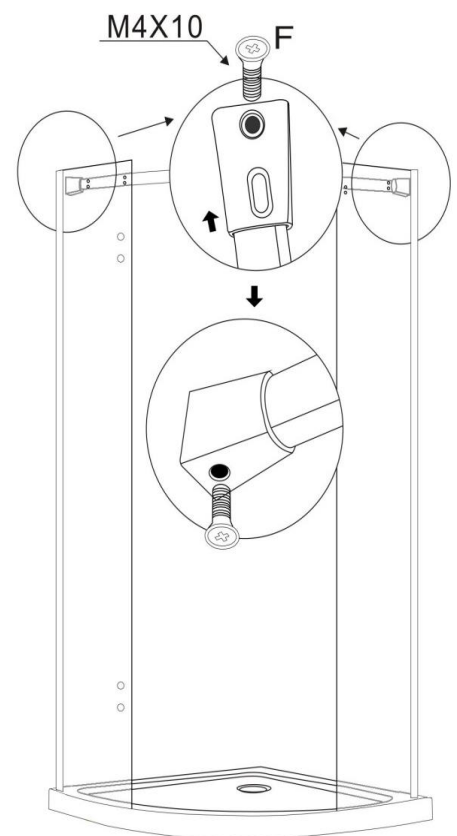


Figure 7

4.4

* Screw in the the screws ST5X60 through the the holes on the fixed glass panel to fasten the supporting bar

Do not forget gasket between screw and glass

* Carry out the same for the four holes

* Then fasten the plate cover(A2) and supporting bar(A) using screws ST5x10(N)

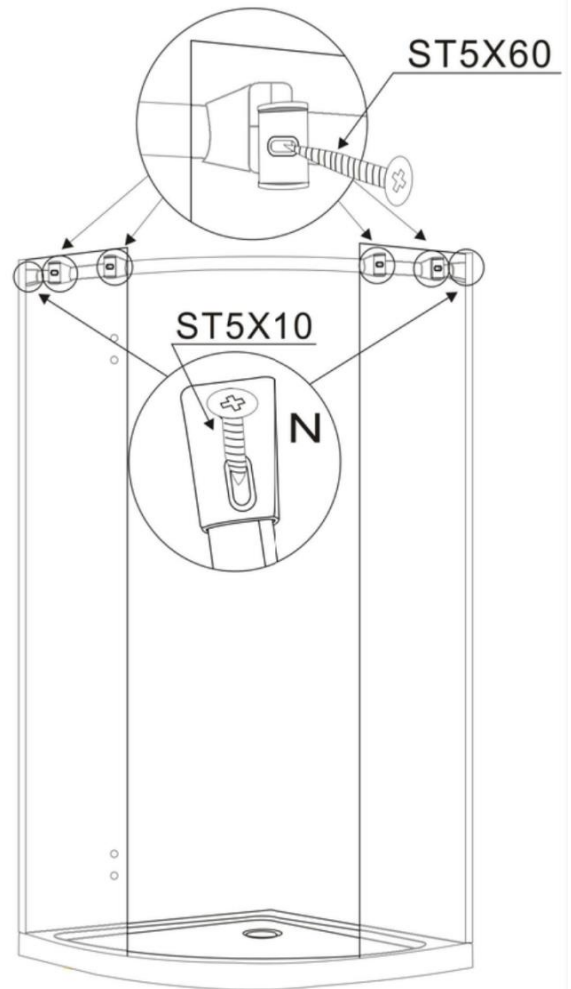


Figure 8

Step 5

Place the glass clips(M) onto the fixed glass panels, then insert the chrome strip(O) into the clips.

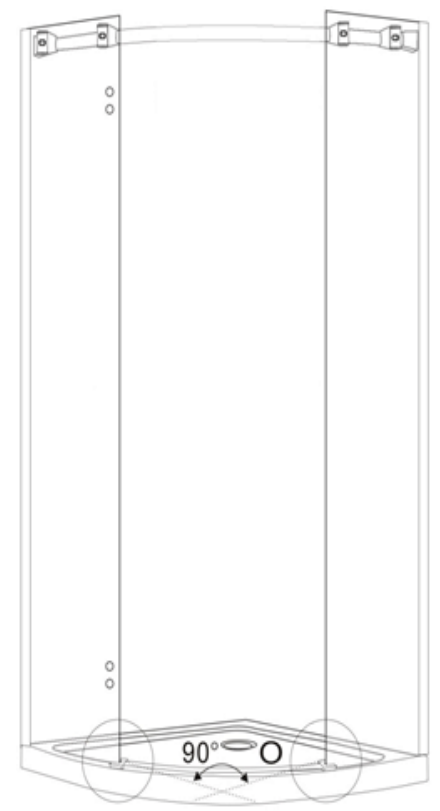


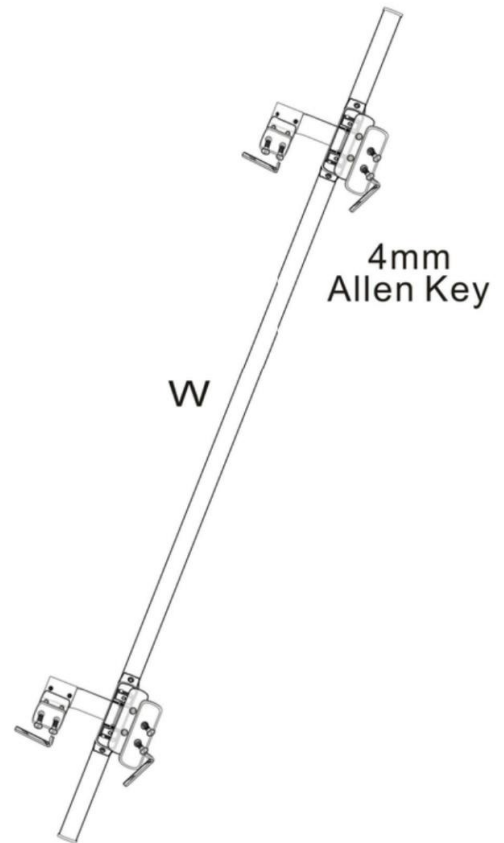
Figure 9

Step 6

6.1

- * Remove the screws M6x14(4pcs) and M6x20(4pcs) from hinge post(W)

Don't lose the gasket!!!



6.2

- * Position the hinge post(W) to door glass(G) and line up the holes

- * Use Allen Key to fasten the screws M6X14 to door glass

See figure 11

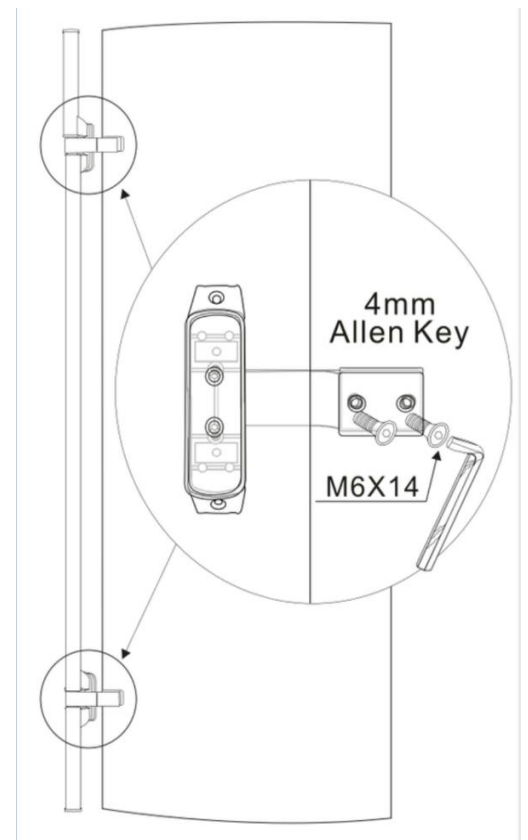


Figure 11

6.3

- * Position the door glass and hinge post onto the small fixed glass panel(I), line up the holes and use Allen Key to fasten the screws M6x20 through the holes on the fixed glass from inside of the enclosure, see figure 12
- * Before tighten the screws M6x20, please check the door glass is level, if not, please adjust the hinge post before tighten the screws, see figure 13

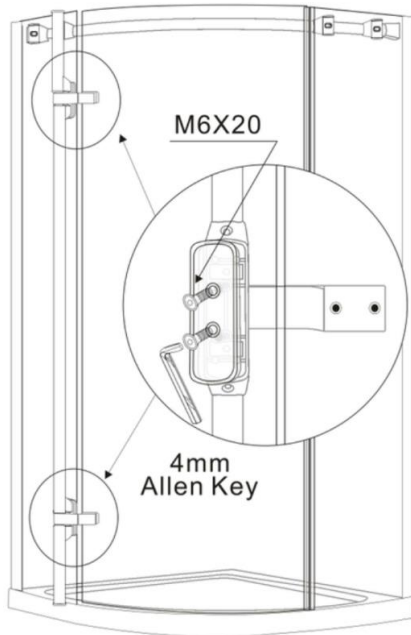


Figure 12

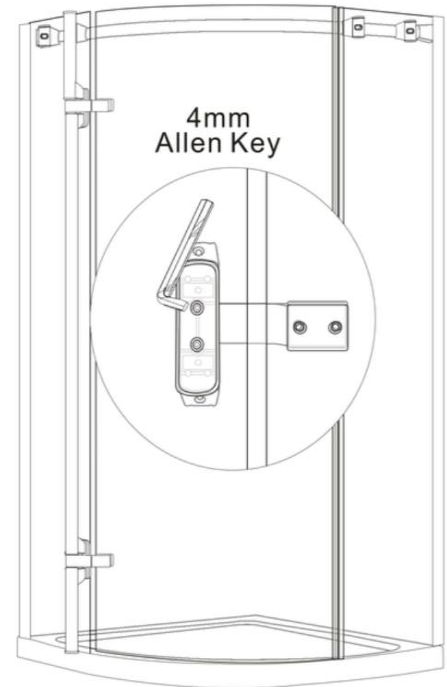


Figure 13

Step 7

7.1

- * Push the magnetic seals (L) onto door panel(G) and large fixed glass(H), cut them to required size. Try to open and close the door to check the magnetic seals working fine. See figure 14

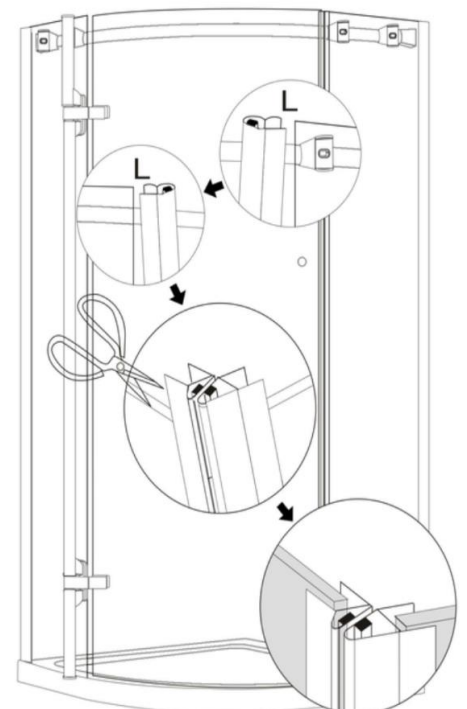
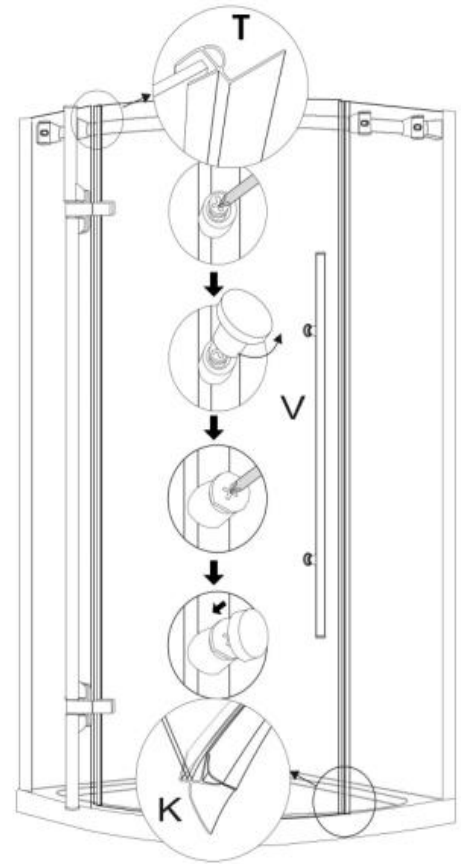


Figure 14

7.2

- * Push the seals(T) onto small fixed glass(I)
- * Insert the seals(K) to the bottom of door glass(G)
- Cut all seals to required sizes

- * Fit handle(V) on the door glass panel
- * **The screws for handles are assembled on the handles during transportation. Remove the screws before installation**



Step 8

Back to Step 3

- * Adjust the fix glass panel to proper position and fix the wall profile and fixed glass profile using 3mm drill bit and ST4x10 screws(U) including washer and screw cap
- * Carry out the same for small fixed glass panel(I)
- * Drill the wall profile and glass profile from inside.
- * Do not drill all the way through to the outside..

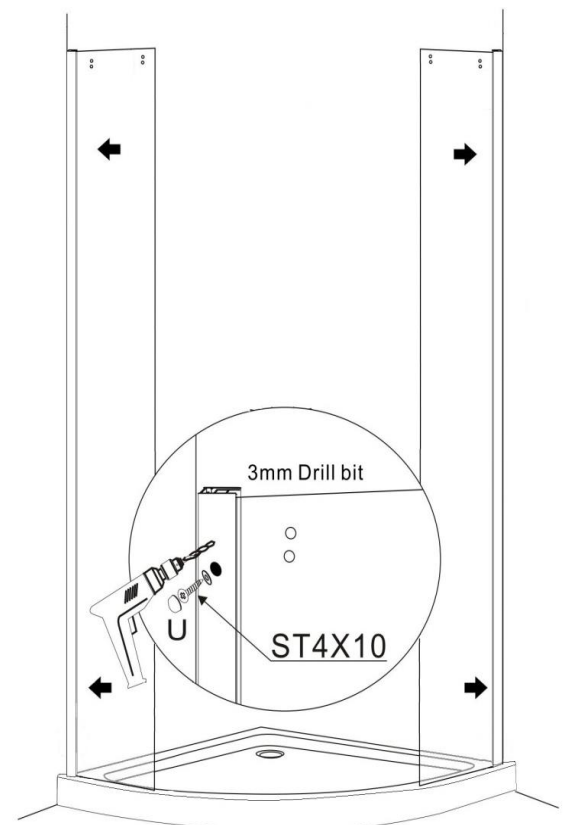


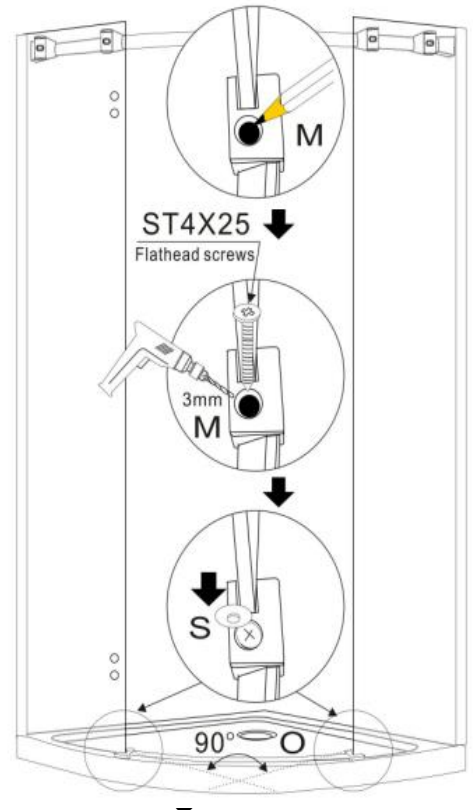
Figure 16

Step 9

Back to Step 5

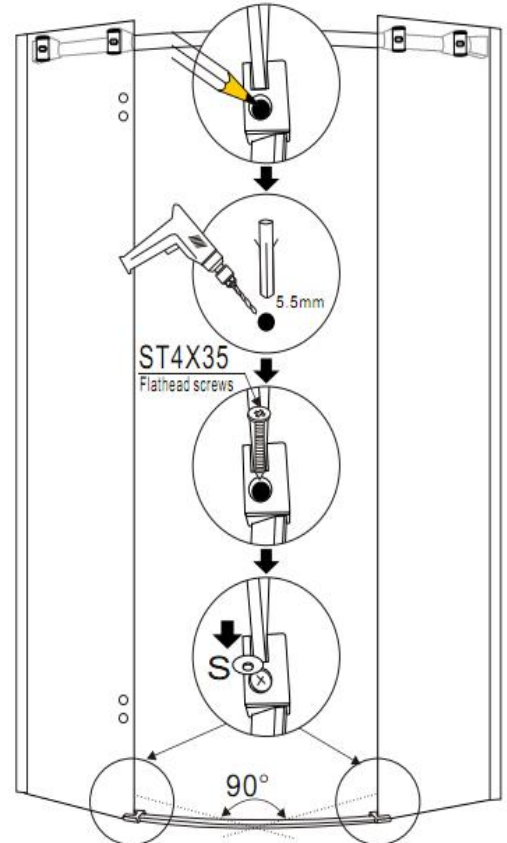
Option 1 - installed on the tray

- * Check the chrome strip and glass clip fitness marking through the holes and remove the strip and clips
- * Drill holes using 3mm drill bit
- * Fasten the screws ST4x25(C) and place the screw cap(S) on



Option 2 - installed on the floor

- * Check the chrome strip and glass clip fitness marking through the holes and remove the strip and clips
- * Drill holes using 5.5mm drill bit
- * Fit the plugs(E) into floor
- * Fasten the screws ST4x35(D) and place the screw cap(S) on



Step 10

- * Push the cover caps onto the supporting bar(A)
- * The cover caps are assembled on the supporting bar during transportation.

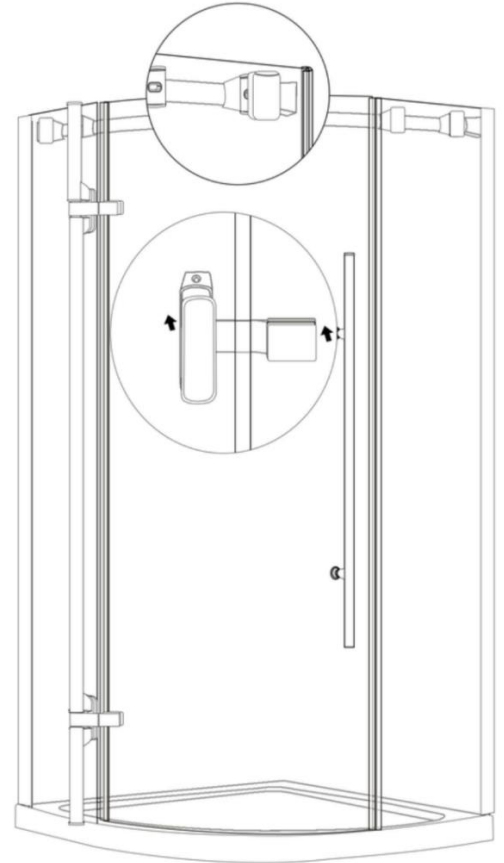


Figure 19

Step 11

Apply silicone along the bottom outer edge of the frame and outer along the vertical profiles

- *** Do silicone along the outside of chrome strip
- *** Do not apply silicone from inside
- *** Do not use the enclosure for at least 24hours to let the silicone fully cure

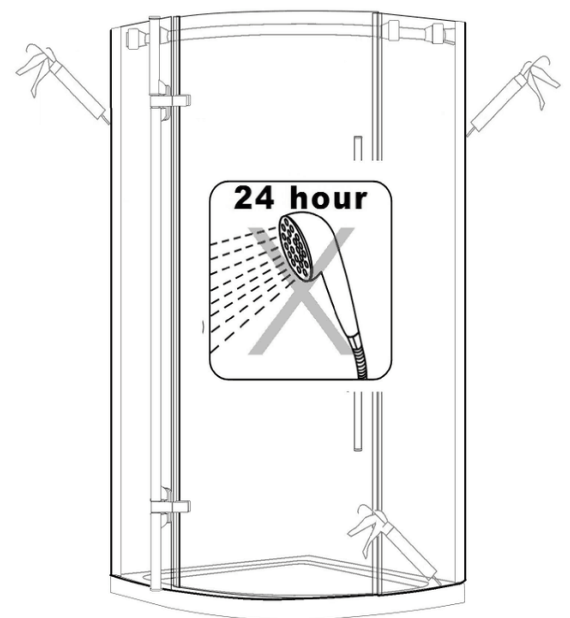


Figure 20