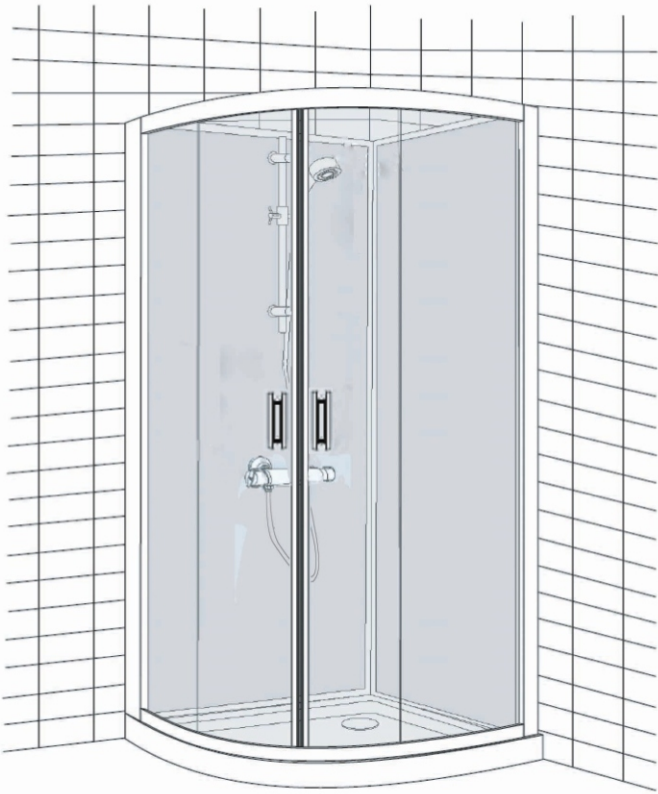


Assembly Instructions
QUADRANT SHOWER ENCLOSURE



Telephone 0844 484 7678

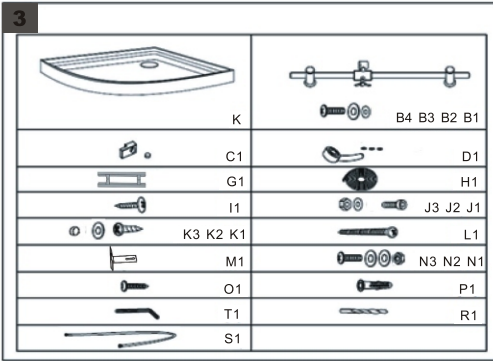
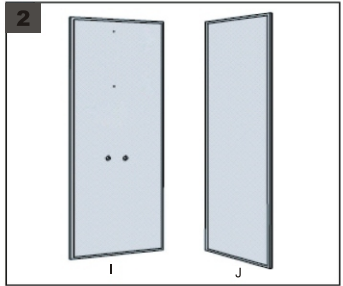
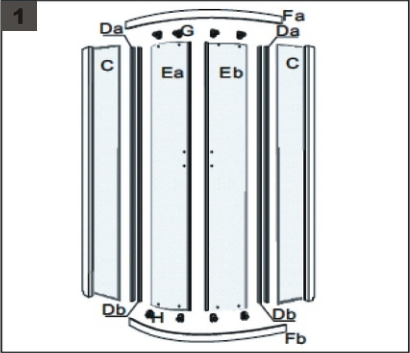
Please retain this manual after installation for future reference and maintenance.

Product must be installed in compliance with relevant Water Regulations Byelaws

IMPORTANT

Heavy - 2 or 3 person installation
Turn off water supply prior to installation
Always flush the pipes prior to installation
Check for leaks following installation
Hot supply must be connected to the left and cold to the right

Parts



1		
C	Fixed panel including profile	2
Da	Vertical seal with 12mm flange	2
Db	Vertical seal with 15mm flange	2
Ea	Left sliding door	1
Eb	Right sliding door	1
Fa	Top rail	1
Fb	Bottom rail	1
G	Top roller	4
H	Bottom spring rollers	4

2		
I	Left hand back panel	1
J	Right hand back panel	1

3		
K	Shower tray	1
B1	Riser rail	1
B2	Plastic gasket	1
B3	Metal gasket	1
B4	Screw ST4x20mm	1
C1	Glass clamp	4
D1	Shower handset	1
G1	Handle	2
H1	Adhesive tape	1
I1	Screw ST4x16mm	4
J1	Screw M4x20mm	6
J2	Washer	12
J3	Nut	6
K1	Screw ST4x10mm	10
L1	Screw ST4x45mm	8
K2	Washer	6
K3	Screw Cap	6
M1	Support bracket	2
N1	Screw M4x20mm	2
N2	Nut	2
N3	Washer	4
O1	Screw St4x25mm	4
P1	Wall plug	4
R1	Drill bit 3mm	1
T1	Hex key 3mm	1
S1	Shower hose	1

Assembly Instructions QUADRANT SHOWER ENCLOSURE

Before you start

•**WARNING:** Please read these instructions through carefully before you start the installation. Incorrect product installation may result in serious product failure in use. Always follow the instructions and retain them for future use.

•When you are ready to start, make sure you have the right tools to hand, plenty of space and a clean dry area for assembly.

•Two people are required for assembly. Please note that although these instructions are comprehensive, it is always recommended that a technically competent installer should undertake installation.

•Ensure that the enclosure is fitted to a smooth, level floor and vertical walls. Ideally the floor of the bathroom should be tiled before installation

•**Please note:** The wall plugs included with this product are suitable for solid walls only. Plasterboard or stud walls may require specialized fixings which are not provided. (Always ensure that the wall plugs or fittings are correct for the wall type.)

•**Caution:** Care should be taken when drilling into walls to avoid hidden pipes or electrical cables.

•When working near a tray or bath, ensure that the waste is covered so that small parts do not fall down it.

•**Caution:** Please handle all glasses with care. Any damage to the edges, or scratches to the surface that occur during assembly or normal use can cause the glass to break suddenly. Tempered glass will shatter into very small pieces that will still have sharp edges.

•**Caution:** Fragile-handle the product with care. This product may cause personal injury, property damage or break easily if not handled, positioned and installed with care.

•**Caution:** Always ensure the product is securely installed before use.

•**Minimum overall height:** 2100mm

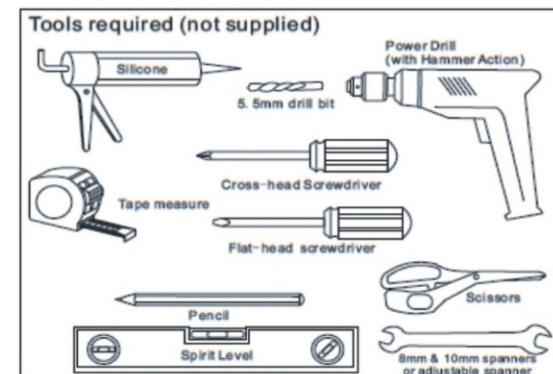
•**Operating Pressure:** Minimum working pressure 1 bar. Recommended operating pressure 2 bar. Maximum working pressure 5 bar

•Please note: the shower head may over-run for up to 30 seconds after the valve is switched off while it clears any excess water inside

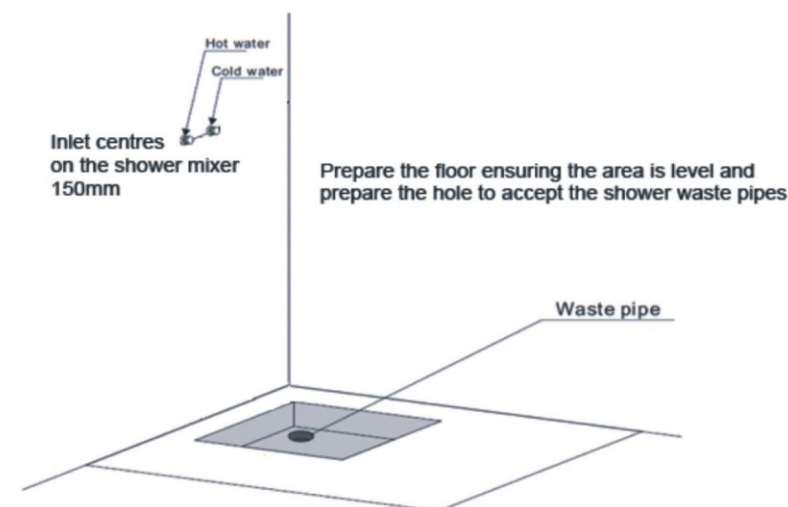
•Do not use the enclosure for 24 hours after installation to allow complete drying of the sealant.

•Do not seal the inside of the enclosure

Assembly Instructions 900x900mm QUADRANT SHOWER ENCLOSURE



Prepare the supply pipes in the wall so that they will align with the holes in the back panel, hot must be on the left.



Assembly Instructions QUADRANT SHOWER ENCLOSURE

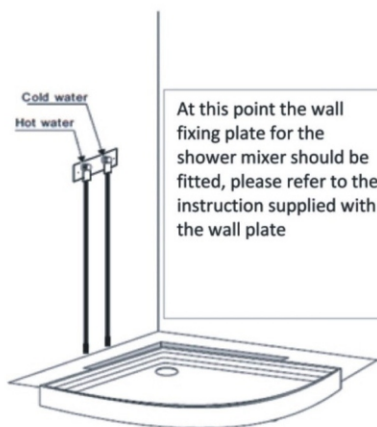
Assembly Instructions 900x900mm QUADRANT SHOWER ENCLOSURE

Assembly

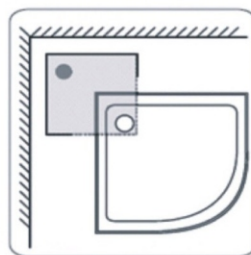
Fit the waste, not supplied to the shower tray (K) as shown in the diagram



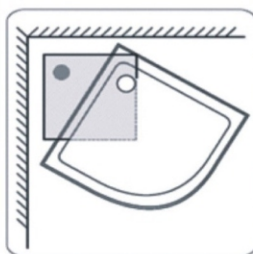
Place the shower tray (K) in position above the cut-out area in the floor. Connect the flexible waste pipe to the waste outlet in the cut-out area in the floor



At this point the wall fixing plate for the shower mixer should be fitted, please refer to the instruction supplied with the wall plate



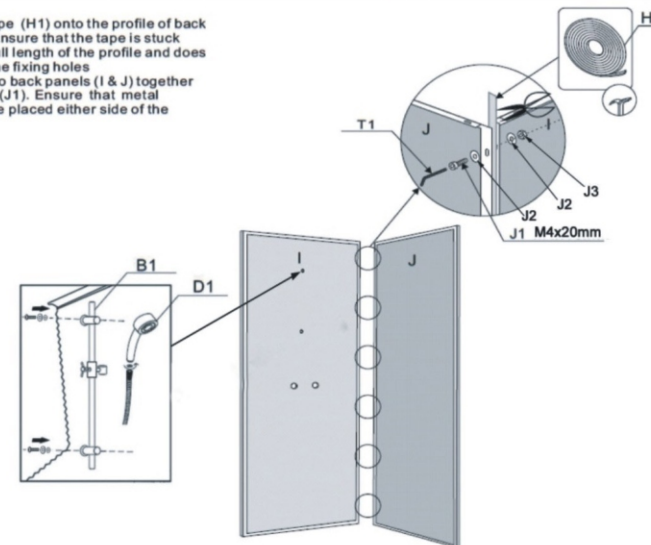
Top view



Top view

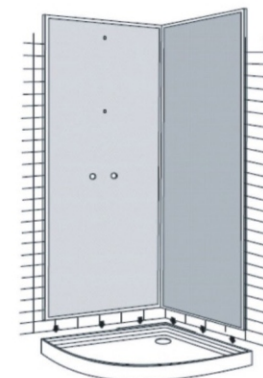
Assembly Instructions QUADRANT SHOWER ENCLOSURE

Stick the tape (H1) onto the profile of back panel (J). Ensure that the tape is stuck along the full length of the profile and does not cover the fixing holes. Connect two back panels (I & J) together using bolts (J1). Ensure that metal washers are placed either side of the profiles.



Place the back panel onto the shower tray

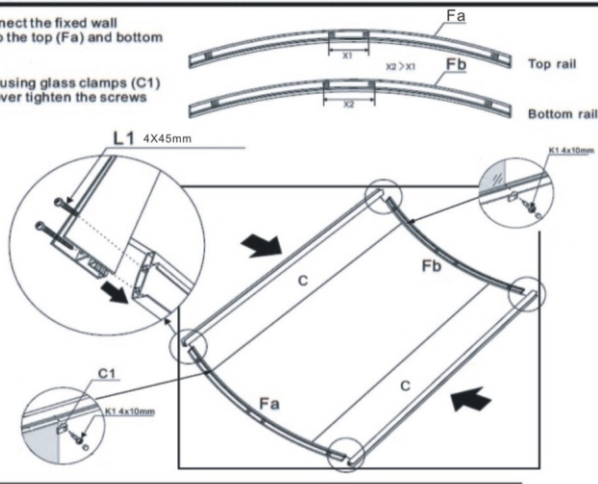
NOTE:
We recommend running a bead of silicone along the tray before the back panels are placed into position.



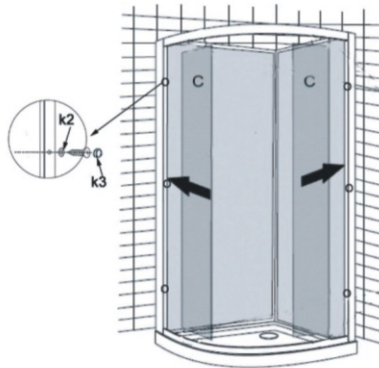
Assembly Instructions QUADRANT SHOWER ENCLOSURE

Using the screws (L1) connect the fixed wall profiles including glass (C) to the top (Fa) and bottom (Fb).

Secure the glass in place using glass clamps (C1) and screws (K1). Do not over tighten the screws (K1).



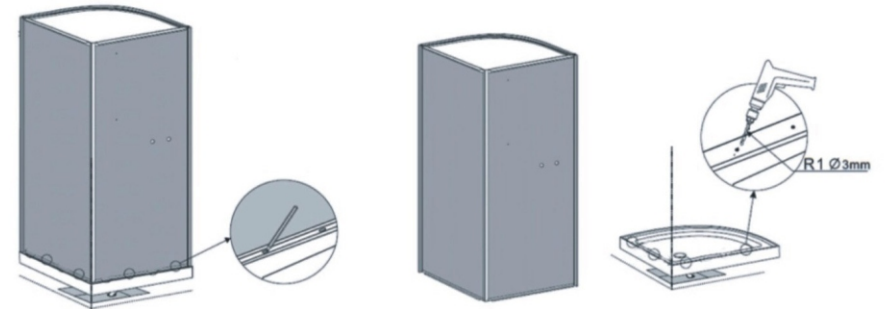
Connect the whole frame with fixed glass with the back panels (I&J), using screws (K1).



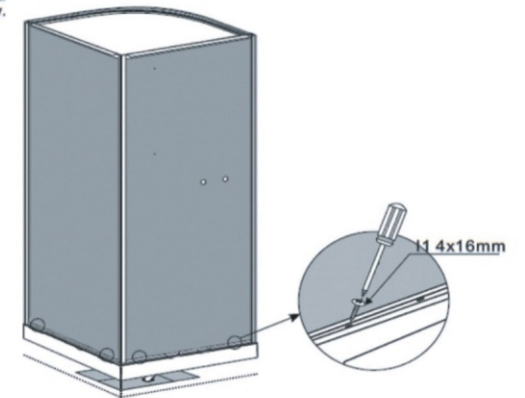
Assembly Instructions QUADRANT SHOWER ENCLOSURE

Adjust the position of the enclosure on the tray so that the back of the left (Ba) and right profiles (Bb) are in-line with the rear of the shower tray.
Using a pencil, mark the position of the fixing holes at the rear of the back panels (I & J) onto the shower tray.

Carefully lift the enclosure off the shower tray and place to one side.
Using the 3mm drill bit (R1) pilot drill the shower tray in the positions marked. It may be necessary to drill the holes at a slight angle. Place the enclosure back into position on the shower tray.



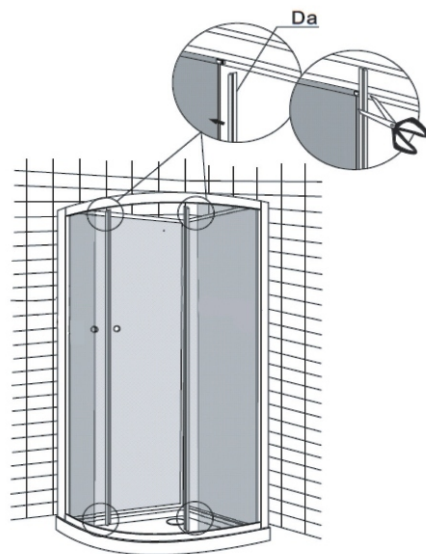
Secure the enclosure to the shower tray using screws (I1). It may be necessary to screw at a slight angle. Tighten the screws by hand only.



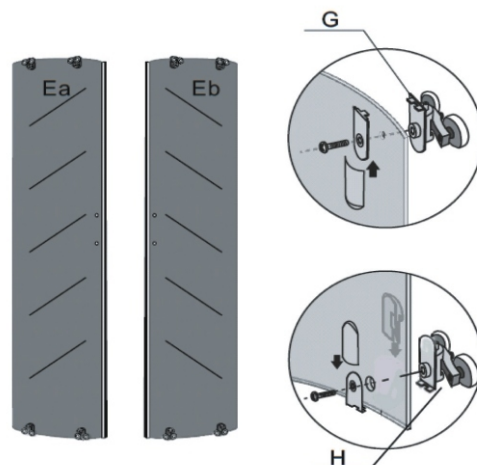
NOTE:
We recommend that sealant is applied to the screw hole to prevent water ingress into the hole.

Assembly Instructions QUADRANT SHOWER ENCLOSURE

Insert the vertical seals with 9mm flange (Da) onto the fixed door and cut to the required length using a sharp knife or a pair of scissors. It may necessary to wet the seals with some water before pushing them onto the glass.

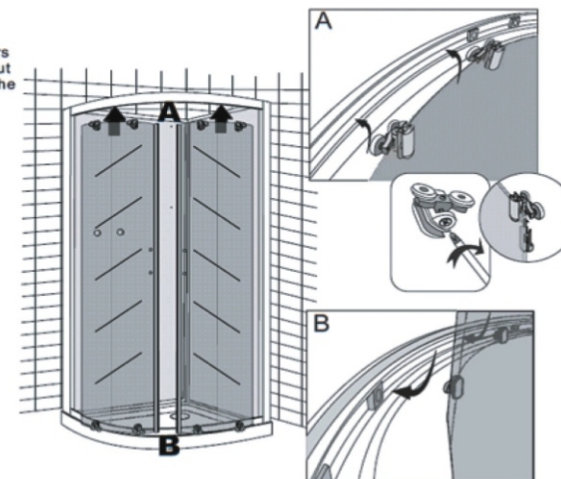


Fit the top and bottom rollers on the sliding doors (Ea & Eb) as illustrated ensuring bottom spring roller (H) are on the bottom, top roller (G) on the top. Do not overtighten.

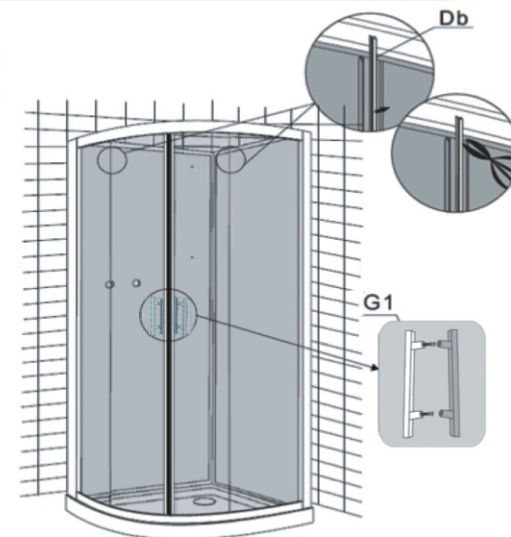


Assembly Instructions QUADRANT SHOWER ENCLOSURE

Hook the rollers into the top rail as shown. Push the spring rollers downwards to insert them into the bottom rail. Using a screwdriver, adjust the rollers until the doors slide smoothly and shut securely. Place the cover caps onto the rollers.

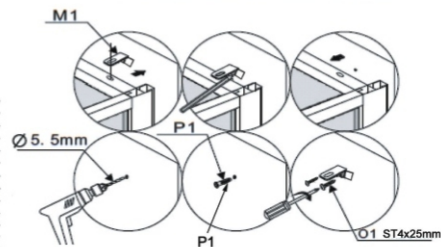
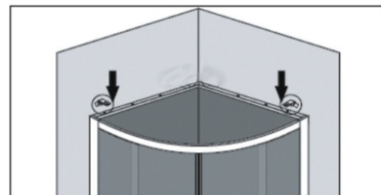


Push the vertical seals with 12mm flange (Db) onto the sliding doors and cut to the required length using a sharp knife or a pair of scissors. It may necessary to wet the seals with some water before pushing them onto the glass. Fit the handle (G1) as illustrated. Ensure that there is a rubber washer either side of the glass.



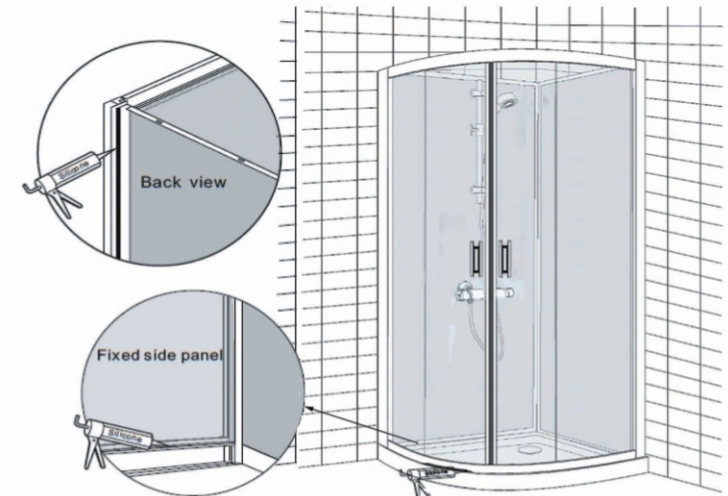
Assembly Instructions QUADRANT SHOWER ENCLOSURE

Place a support bracket (M1) over the pre-drilled holes in the top of the enclosure as shown in the diagram. Using a pencil, mark the position of the support brackets on the walls. Move the enclosure back away from the walls. Using a 5.5mm drill bit suitable for the wall type drill the positions marked on the walls. Insert the wall plugs (P1) into the holes drilled in the walls. Using a screwdriver, secure the support brackets (M1) to the walls using screws (O1).



Assembly Instructions QUADRANT SHOWER ENCLOSURE

Apply sealant to all external joints on frame and between frame and tray.
Do not use the enclosure for at least 24



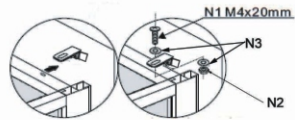
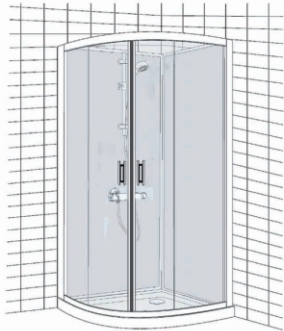
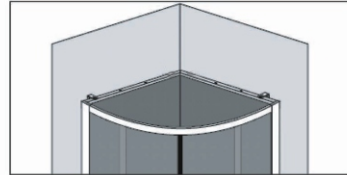
Assembly Instructions

QUADRANT SHOWER ENCLOSURE

Push the enclosure back into its final installation position ensuring that the flexible waste pipe is not kinked.

Screw cups(N3) could be fitted at both sides of the bracket for supporting.

Secure the shower enclosure to the support brackets using screws (N1) and nuts (N2).



CARE & USE

- Soapy water is adequate to keep the glass clean, although glass cleaner can be used if required. Scourers, abrasives and chemical cleaners can damage the glass and should not be used.
- In hard water areas, insoluble lime salts may be deposited on the glass. If this is allowed to build up it becomes increasingly difficult to remove and looks unsightly. Regular cleaning will minimize this effect.
- Regularly check moving parts such as rollers and hinges to ensure they are secure and adjusted correctly. Tighten and adjust where required. Also check all sealed joints to ensure seal has not deteriorated. Re-seal if required.