

## Cleaning

All chrome surfaces should be cleaned using a clean damp cloth.

No abrasive cleaning agents or materials should be used.

General glass cleaner can be used for the screen, but ensure that this will not damage the chrome, check the cleaning information on the product before use.

**Important - Before installation check the size of the space against the below**

1000 Enclosure fits into a space 950 - 990mm

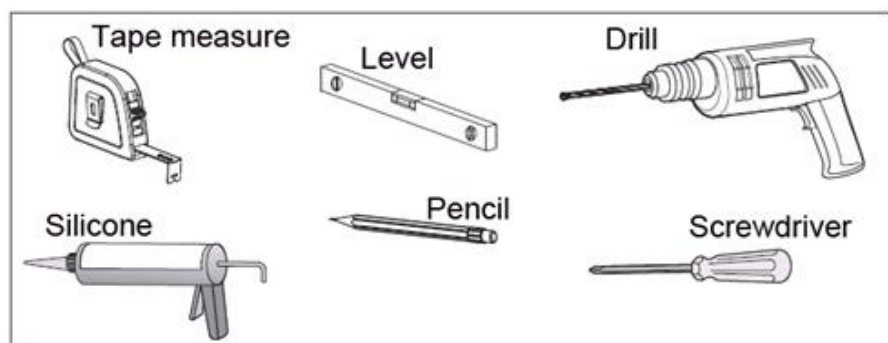
1200 Enclosure fits into a space 1150 - 1190mm

1400 Enclosure fits into a space 1350 - 1390mm

1600 Enclosure fits into a space 1550 - 1590mm

1700 Enclosure fits into a space 1650 - 1690mm

## Tools



Telephone  
**0844 484 7678**

# Sliding Door Enclosure



Please retain this manual after installation for future reference and maintenance.

Images are for installation purposes only.



### IMPORTANT

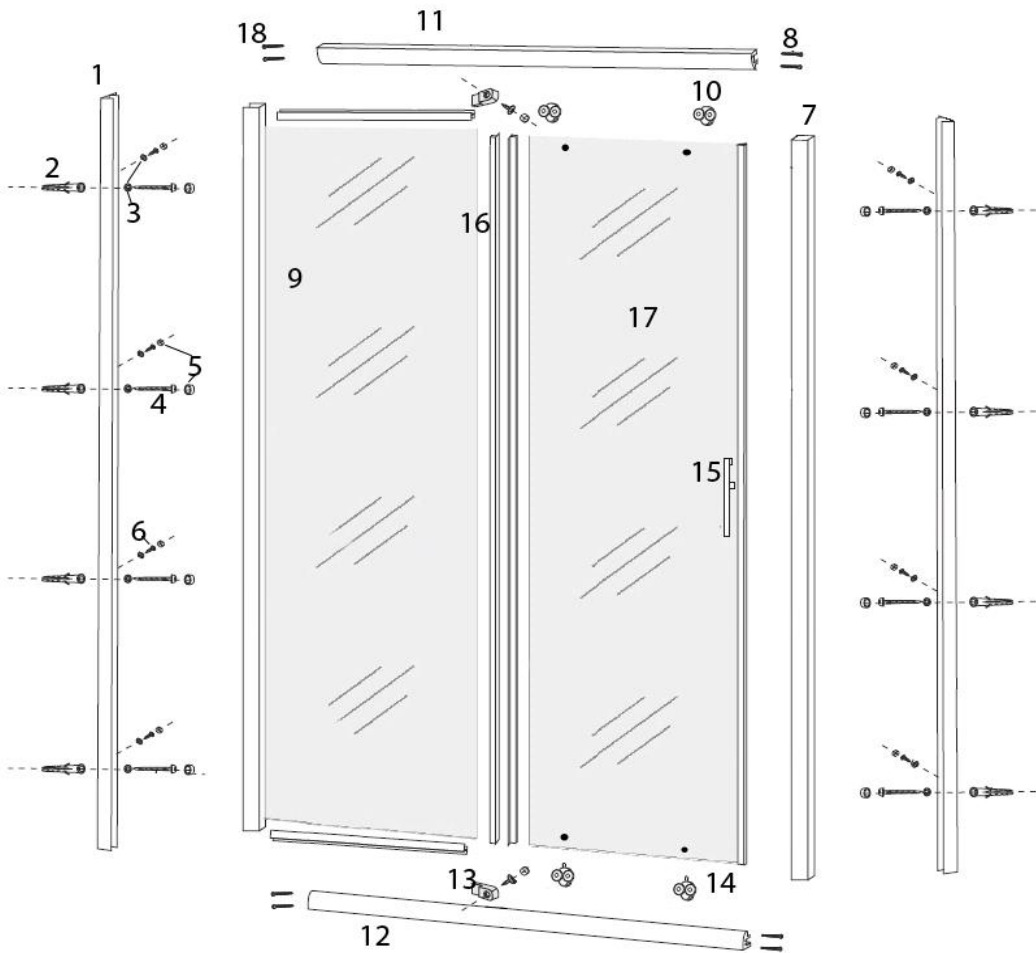
Handle with care, impact can damage both the glass and frame

Check for pipes and wires prior to drilling

Use of safety equipment is advised

Two people may be required for parts of the installation

Parts



Parts

Part	Qty	Description
1	2	Wall channel
2	8	Wall plug
3	16	Screw cup
4	8	Wall screw (M4 x25)
5	18	Screw cap
6	10	Profile screw (M4 x10)
7	1	Door profile
8	4	Frame screws (M4 x 55)
9	1	Fixed glass and profile
10	2	Fixed rollers
11	1	Top profile
12	1	Bottom profile
13	2	Glass clip
14	2	Spring loaded roller
15	1	Handle
16	2	Vertical seal
17	1	Door
18	4	Frame screws (M4 x 45)

## Installation - Step 1

### A

Offer the glass and profile (9) to the bottom profile (12)

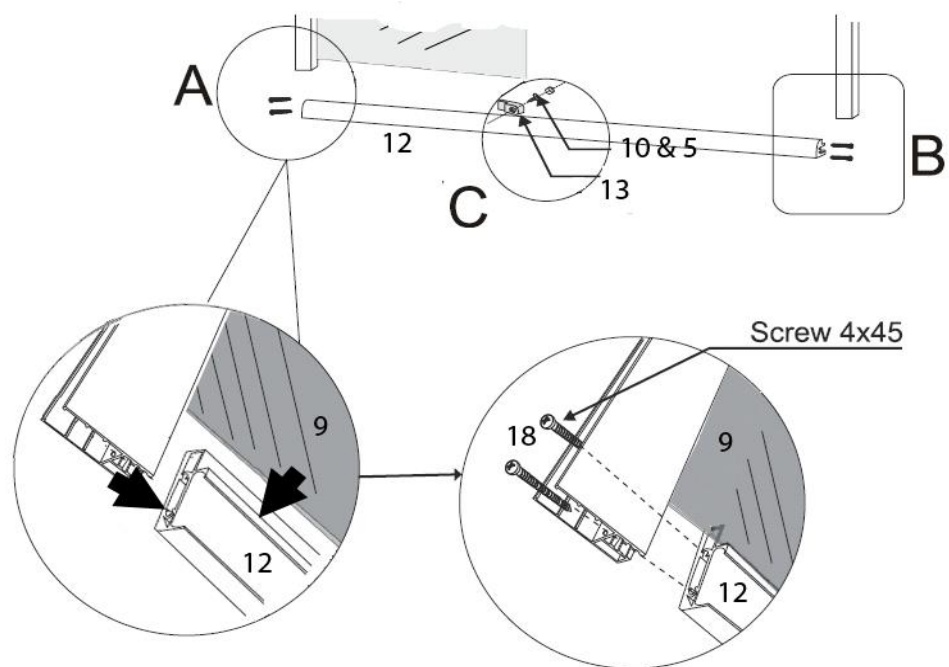
Align the holes in both profiles.

Feed the screws (18) M4 x 45 through the glass profile and screw into bottom profile (12)

A bead of clear silicone can be applied between the glass and the profile (12)

### B

Carry out the same assembly of the frame at the open end, using screws (8) M4 x 55



## Installation - Step 2

### B

Position the top profile (11) between the two side profiles (7) and (9)

Align the screw holes and feed the screws through the side profiles into the top profile.

Use screws (18) M4 x 45 at the closed end and screws (8) M4 x 55 at the open end

### C

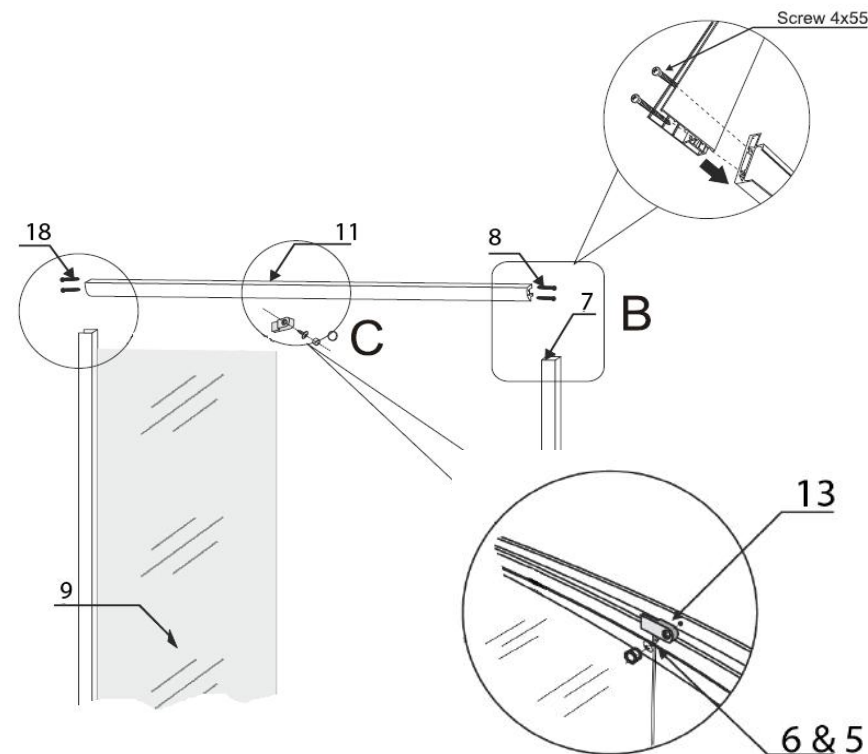
With the frame assembled and fixed glass in position, fit the glass retaining clips (13)

Position these over the edge of the fixed glass and secure into position using one of

screws (6) M4 x10 and push on screw caps (5)

Screw these clips into the pre-drilled holes in the frame.

Install the clips to both the top and bottom profiles.



### Installation - Step 3

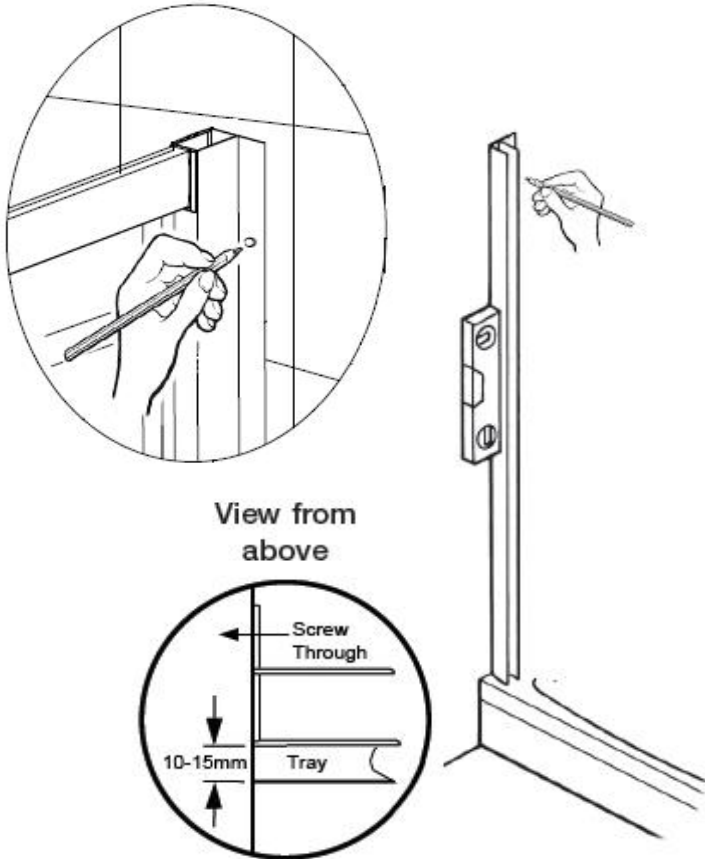
Place the wall channel on the tray approx 10-15mm in from the front edge of the tray.

Using a level ensure the channel is vertical.

Mark the drill holes on the wall through the wall channel lip, to the side of the main channel.

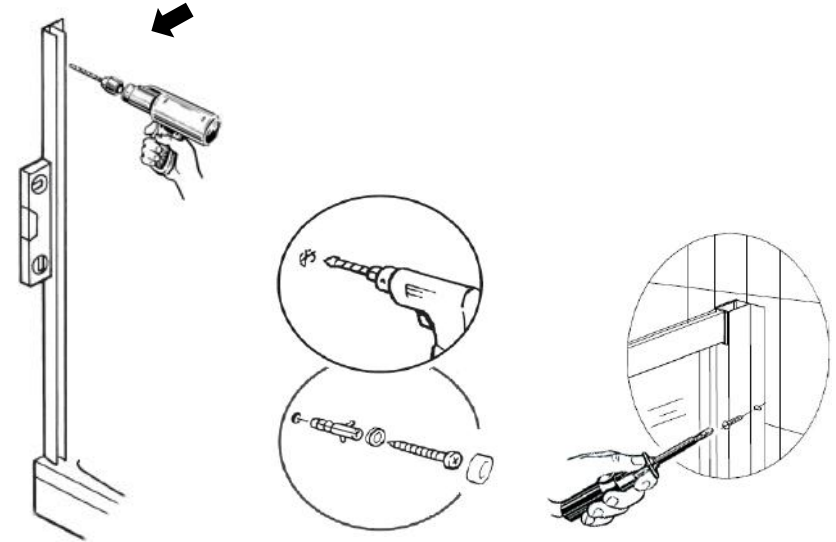
Carry out the same process for both wall channels

Alternatively you can push the door frame into both wall channels then place this onto the tray and mark the holes.



### Installation - Step 4

Once the wall has been marked, remove the assembly and drill the wall using suitable drill bit for your wall type.



After drilling, insert wall plugs and tap in so flush with finished wall.

Hold one wall channel against the wall over the drill holes

Screw the wall channel to the wall ensuring to fit washer onto screw M4 x 25, to allow fitting of the screw cover.

NOTE: Sealant can be applied between the wall channel and the wall.

NOTE: Depending on your recess size a different method of assembly may be required, or the next step.

### Installation - Step 5 (Option 1)

Fitting the second wall channel and door frame, will depend on the size of the recess in which the assembly is being fitted.

If the size allows, you can secure the second wall channel to the wall, then:

Slide into one wall channel (1), push back (2), then across into the other channel (3)

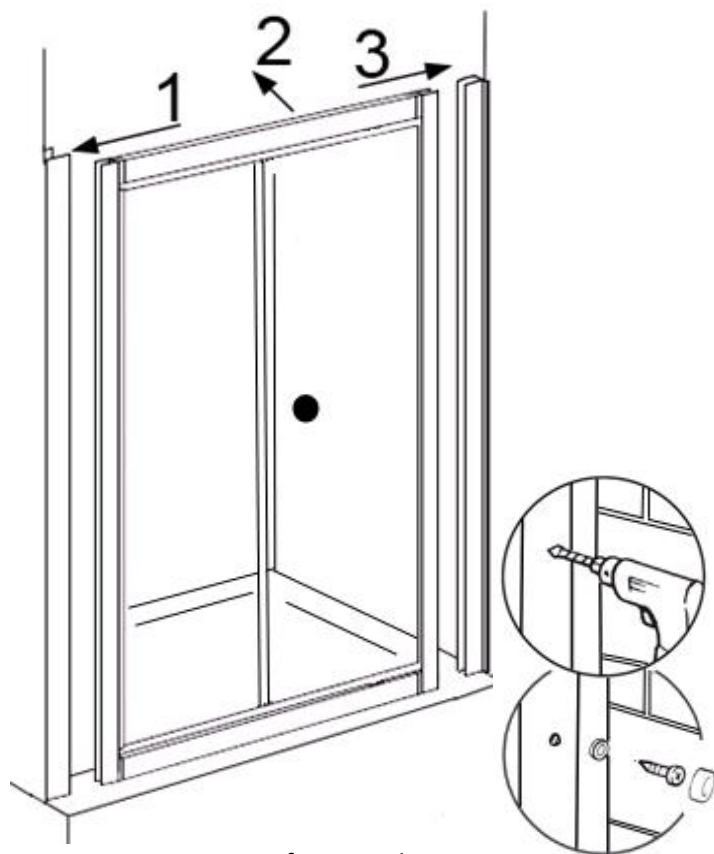
Position as required within the channels.

Ensure the door frame is level.

Drill the wall channels and profile from the inside, **do not drill through to the outside of the wall channel.**

Secure into position using screws (6) M4 x 10, ensure to fit screw cups (3)

Finally push on screw covers (5)



View from inside

### Installation - Step 5 (Option 2)

If the recess in which the assembly is being fitted does not allow for Option 1, the following process should be used.

Slide the wall channels onto the frame, then place this onto the tray over the drill holes.

Secure the wall channels to the wall in the same way as Option 1.

Then drill the wall channel and frame and secure in the same way as in Option 1

### Installation - Step 6

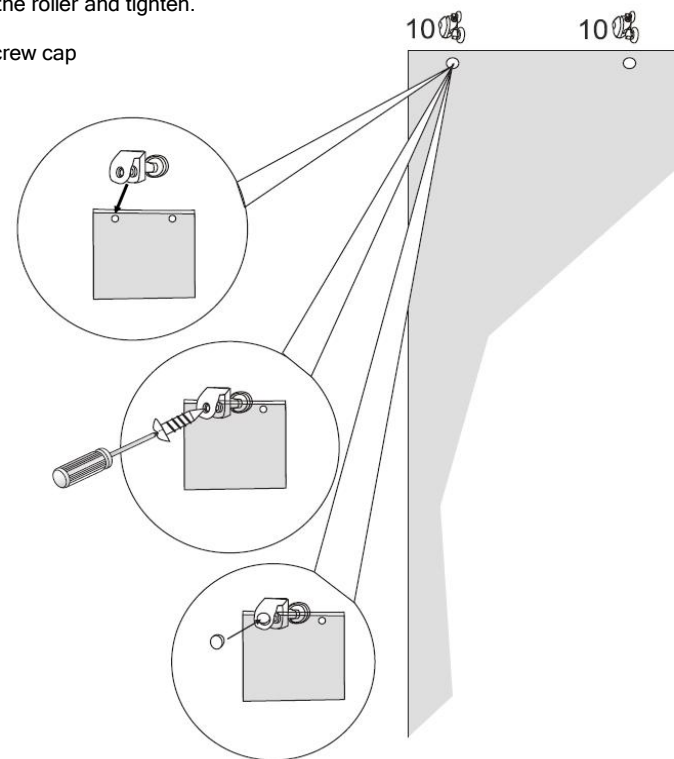
Place the double **fixed** rollers (10) over the top edge of the door (17) and align with holes in door (17)

Fit the screw through the roller and tighten.

Then fit the chrome screw cap

Carry out the same process for the bottom rollers (14).

Ensuring that the spring loaded rollers (14) are fitted to the bottom of the door (17).

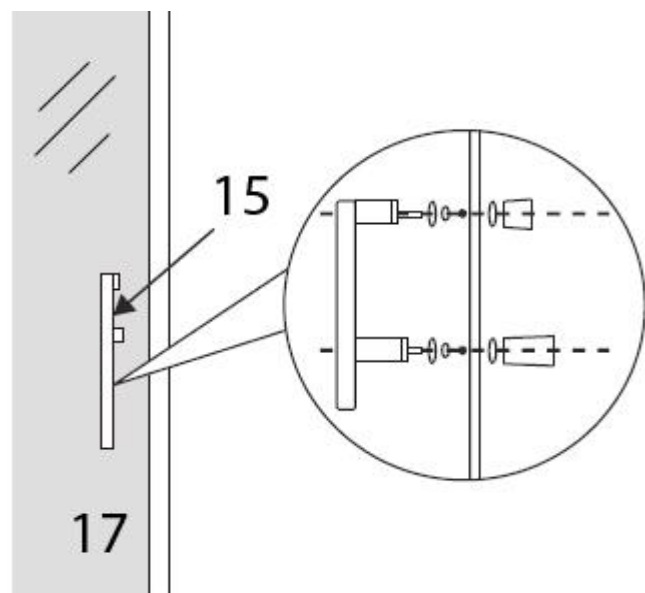


### Installation - Step 7

Offer the door handle (15) to the door (17)

Place the thread on the handle through the holes in the door ensuring to fit provided washers.

From the inside fit the thread covers and tighten.



### Installation - Step 8

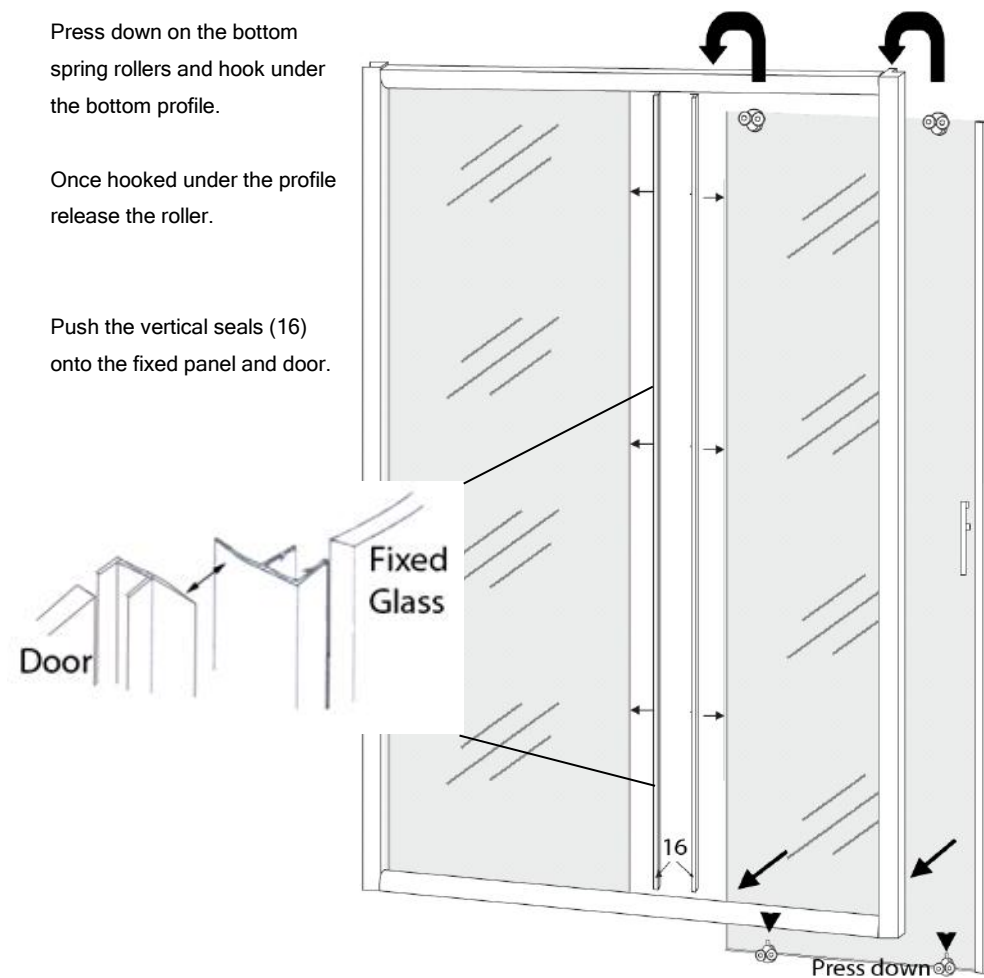
Once the rollers are attached and secure, hook the top rollers onto the top profile.

After these are hooked securely onto the profile, push the bottom of the door towards the bottom profile.

Press down on the bottom spring rollers and hook under the bottom profile.

Once hooked under the profile release the roller.

Push the vertical seals (16) onto the fixed panel and door.



### Installation - Step 8

Sealing should be carried out along the bottom outer edge of the frame and up the outside of the wall channels.

**DO NOT** seal on the inside of the enclosure.

After sealing do not use the enclosure for at least 24 hours



## Guarantee

Your product comes with a 1 year guarantee when installed, used and cleaned in accordance with this manual.

### **Not covered by the guarantee is:**

- Breakdown due to -
  - a) Use other than domestic
  - b) Wilful act of neglect
  - c) Any malfunction resulting from incorrect use
  - d) Incorrect assembly/installation
- Repair costs for damage caused by foreign objects or substances
- Total loss of the product due to non-availability of parts
- Compensation for loss of use of the product or consequential loss of any kind.
- Call out charges where no fault has been found with the product.
- The cost of repair or replacement of any accessories installed at the same time.
- The cost of routine maintenance, adjustments, overhaul, modifications, loss or damage, arising therefrom, including the cost of repairing damage, breakdown, malfunction caused by incorrect use, assembly or maintenance