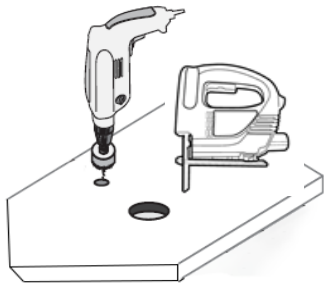


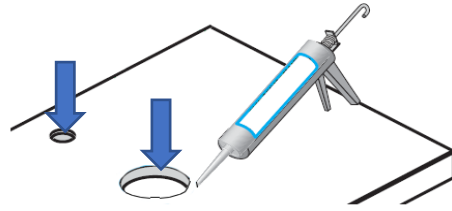
Countertop Basin Installation

1



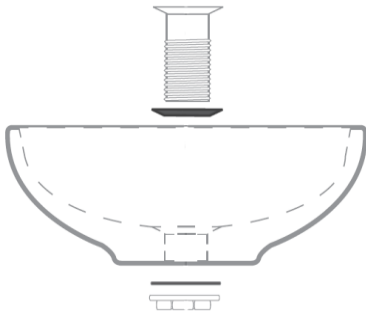
Cut holes if necessary for waste and tap

2



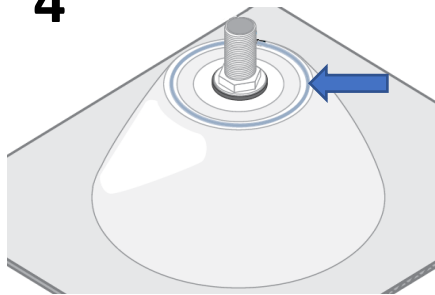
Seal the inside/exposed edge after cutting to prevent water/moisture penetration

3



Fit basin waste to basin, following the waste instruction

4

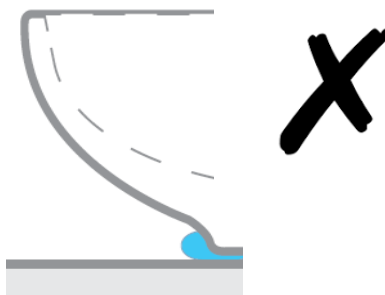


Apply a bead of silicone slightly in from the edge of the basin

5

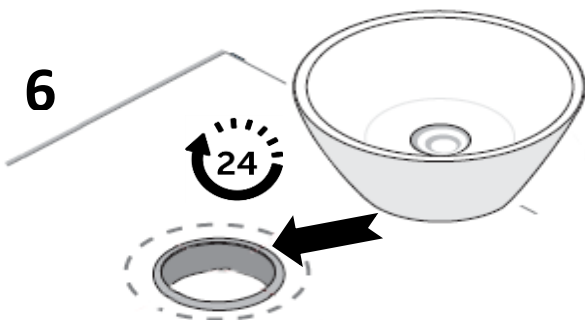


Correct application



Incorrect application

6



Place basin into position over the hole in the unit top and leave for at least 24 hours to allow the silicone to dry

Failure to seal the basin in this way will invalidate any guarantee

AUG 18 - V1-BB