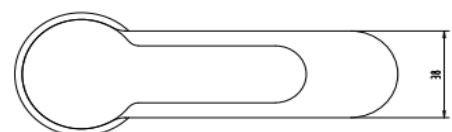
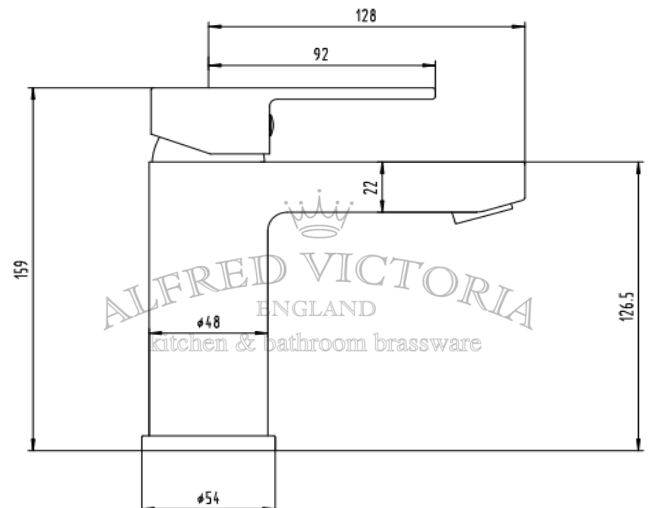


# TECHNICAL DATA SHEET

## SG05 Mono Basin Mixer (Inc. Sprung Waste)

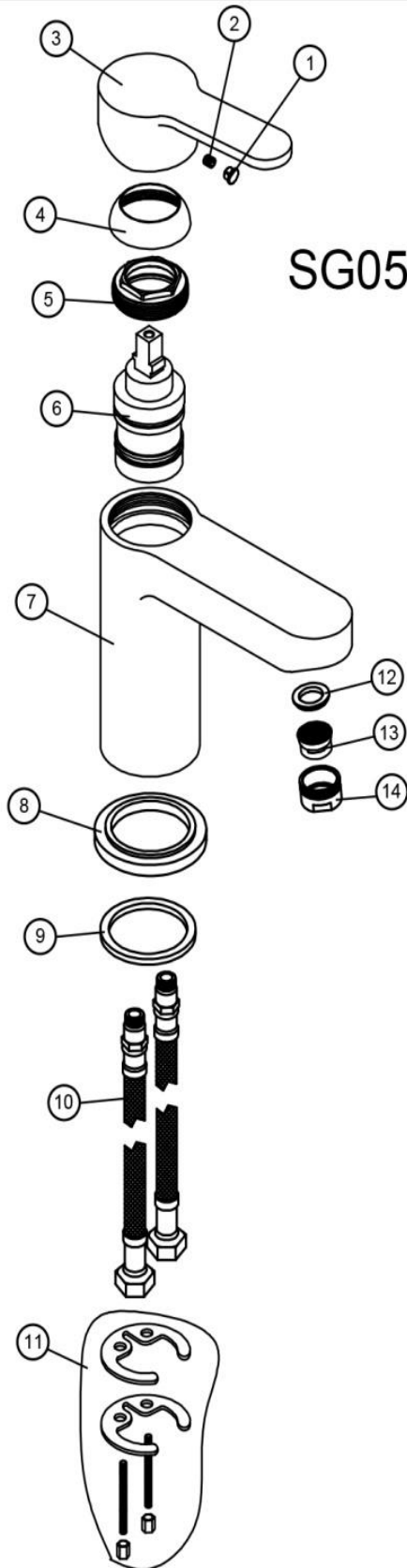
<b>Barcode</b>	729557183218
<b>Product Code</b>	SG05
<b>Construction</b>	Brass Body CuZn40Pb2, EN CW617N (equivalent to BS CZ122)
<b>Finishes</b>	Chrome plated to BS EN 248
<b>Product Type</b>	Contemporary
<b>Water Pressure</b>	Min. 0.2 bar, Max. 6.0 bar
<b>Plumbing Systems</b>	Suitable for all plumbing systems
<b>Standards</b>	Complies with BS6920, BS EN200
<b>Certification</b>	Manufactured to comply with WRAS
<b>Cartridge</b>	35mm ceramic disc cartridge
<b>Fitting</b>	UK: M10 x 350mm ½" BSP Female Flexi Tails . EU: M10x350mm 3/8" BSP Female Flexi Tails.
<b>Packaging</b>	35.5 x 27 x 42cm / carton (10 boxes / carton)
<b>Guarantee</b>	10 years against manufacturing faults (excluding serviceable parts).
<b>Additional Information</b>	Supplied with G 1¼" sprung waste(UK only), Air Aerator



### Flow Rates (Litres per minute)

System Pressure	0.1 Bar	0.2 Bar	0.3 Bar	0.5 Bar	1.0 Bar	1.5 Bar	2.0 Bar	3.0 Bar	4.0 Bar	5.0 Bar
<b>SG05</b>	3.20	3.80		5.30	6.80	8.20	9.50	11.30	-	-

The information contained on this page was correct at date of issue. Fitting dimensions are provided as a guide only. Some variation may occur due to manufacturing tolerances. We pursue a policy of continuing improvement in design and performance of our products and so reserve the right to change specifications without prior notice.



## SG05: Mono Basin Mixer

NO.	CODE	DESCRIPTION	QTY
1	SG05-01	INDICE	1
2	SG05-02	SCREW	1
3	SG05-03	HANDLE	1
4	SG05-04	PLASTIC COVER	1
5	SG05-05	CARTRIDGE NUT	1
6	SG05-06	40 CARTRIDGE	1
7	SG05-07	BODY	1
8	SG05-08	BASE PLATE	1
9	SG05-09	WASHER	1
10	SG05-10	M10*1*400 FLEXI TAILS	2
11	SG05-11	M6 FIXING KIT	1
12	SG05-12	WASHER	1
13	SG05-13	NEOPERL AERATOR	1
14	SG05-14	M24*1 NOZZLE	1

Alfred Victoria Exploded Drawings			Material:	Assembly	Size:	A4
(Date:D/M/Y)			Scale:	None	Issue No:	01
Drawn by:	Sherman	16/05/2016				
Checked by:	Lee	16/05/2016				
Approved by:	T. K.	16/05/2016				
Drawing Name:						