



EN

OIL FILLED RADIATOR

WHISPER 9

WHISPER 11



This product is only suitable for well insulated spaces or occasional use.

OPERATING INSTRUCTIONS

Read the instructions carefully before operating the panel or carrying out maintenance operations. Observe all the safety instructions; failure to observe the instructions may lead to accidents and/or damages. Store these instructions.

GENERAL SAFETY INFORMATION

- Use this product only as outlined in this manual. Any other use not recommended by the manufacturer may cause fire, electric shock or injury to persons.
 - Ensure that the mains voltage complies with that indicated on the panel heater data plate (220-240V/50-60Hz).
 - This appliance can be used by children aged from 8 years and above and people with reduced physical, sensory or mental capabilities or lack of experience and knowledge if they have been given supervision or instruction concerning use of the appliance in a safe way and understand the hazards involved.
 - Children shall not play with the appliance.
 - Cleaning and user maintenance shall not be made by children without supervision.
 - Remove the product from its packaging and check that it is in good condition before use. Keep any plastic bags away from children.
 - Check the cord and plug before using the panel to ensure that they have not been damaged during transport.
 - This product is not a toy.
 - Children under the age of 3 must be kept away if not continuously supervised.
 - Children aged between 3 and 8 must only turn the appliance on / off as long as it has been placed or installed in its normal operating position and that they receive surveillance or instructions regarding the safe use of the appliance and understand the dangers.
 - Children between 3 and 8 years of age must not insert the plug, adjust or clean the appliance or carry out maintenance by the user.
- CAUTION - Some parts of this product can become very hot and cause burns. Particular attention has to be given where children and vulnerable people are present.**
- **WARNING:** In order to avoid hazard due to inadvertent resetting of the thermal cut-out, this appliance must not be supplied through an external switching device, such as a timer, or connected to a circuit that is regularly switched on and off by the utility.

WARNING: DO NOT USE THE RADIATOR WITH A CONTROLLER OR ANY OTHER EXTERNAL DEVICE THAT ACTIVATES THE APPLIANCE AUTOMATICALLY, AS THERE MAY BE A RISK OF FIRE IF THE FAN HEATER IS COVERED OR INCORRECTLY POSITIONED.

- Disconnect the mains power when the appliance is not used or for cleaning operations.
- To disconnect the radiator, push the switches to OFF and remove the plug from the socket. Pull on the plug only. Do not pull the cord.
- Avoid placing fingers or foreign objects in the air inlet/outlet grilles, as this may lead to electric shock or fire and may damage the unit. To avoid the risk of fire, do not block the grilles or tamper with them in any way while the panel heater operates.
- Do not use the product if the cord or plug is damaged. If the power cable is damaged, it must be replaced by the manufacturer or its technical assistance service or in any case by a person with a similar qualification, in order to prevent any risk.
- Do not place any objects on the cord and do not bend it. During operation, the cord must be entirely unwound.
- It is not advisable to use extension cords, as these may overheat and cause the risk of fire. Do not use a single extension cord to operate more than one panel.
- The radiator heats up significantly during operation. Risk of burn. To avoid injury, do not allow skin to come into contact with a hot surface. Use the handle to move the panel. Keep flammable materials such as furniture, cushions, blankets, paper, clothes, curtains and similar at a distance of 1 metre.
- Do not immerse the cord, plug or any other element of the panel in water or other liquids.
- Do not touch the plug or panel with wet hands.
- Avoid using the radiator in dusty environments or in the presence of flammable vapours (e.g. in workshops or garages).
- Do not place the radiator above or near another heat source.

WARNING: AVOID COVERING THE PANEL HEATER TO PREVENT IT FROM OVERHEATING.

- The symbol below signals the above warning:



- The radiator may cause risk of fire if, while in operation, is covered by or comes into contact with flammable material including curtains, drapery, blankets, etc. **KEEP THE RADIATOR AWAY FROM THESE MATERIALS.**
- Do not insert and avoid accidental insertion of any external objects into the ventilation or discharge outlets as this may lead to electric shock, fire or damage the panel.
- A radiator contains parts that generate arcs or sparks. It must not be used in potentially dangerous areas such as areas at risk of fire or explosion, or areas loaded with chemical substances or humidity.
- Do not use the radiator on soft surfaces such as beds, where the grilles may be covered. Always stand the panel heater on a flat, stable surface when in operation, in order to prevent it from overturning. Arrange the cord in such a way that the radiator and other objects do not rest on it. Do not run the cord under carpets. Do not cover the cord with blankets, carpets or similar materials. Place the cord far away from busy areas, or in a place where it cannot be accidentally pulled-out.
- This radiator cannot be used in bathrooms, laundry rooms, next to a shower or swimming pool or in similar indoor environments. Never position the radiator where it may fall into a bath or other containers of water.
- Never position the radiator on a wet floor.
- In any case, the adjustment knobs must never be accessible by anyone in a bath or shower.
- The heating appliance must not be positioned immediately below a power outlet.
- The socket must be earthed.
- Do not allow the electric cord to touch the mesh cover when the panel is hot or in operation, in order to avoid the high temperatures ruining the cord.

- Do not operate the panel heater outdoors. Do not use the radiator in front of or near an open window.
- Upon initial start-up, the radiator may emit a slight, harmless smell. This smell is a normal effect of the initial heating up of the internal heating elements, and should not recur later on.
- Do not attempt to repair, disassemble or modify the panel. The radiator does not contain parts that can be repaired by the user.
- Turn the switch off and unplug before carrying out any maintenance work or moving the panel heater. Always unplug from the socket when the radiator is not in use.

WARNING: ALWAYS UNPLUG WHEN CARRYING OUT MAINTENANCE WORK OR MOVING THE RADIATOR.

- Do not place anything on the radiator; avoid placing wet garments on the radiator.
- Turn the appliance off if unattended in order to avoid accidents.
- If the product is not used for prolonged periods, disconnect the plug, replace the unit in its box and store it in a dry, ventilated place.
- Ensure that the air inlet /outlet are not close to walls or curtains when the panel is in use, so as to avoid obstructing the unit and hampering its efficiency.
- Should you hear an abnormal noise or detect an unusual smell when using the panel, cease use and unplug immediately.
- Do not use the radiator in rooms measuring less than 4 m².
- Do not expose the elderly or children to a continuous flow of air.
- Do not use the radiator if it has been dropped or damaged.

WARNING:

THE ON/OFF SWITCH IS NOT THE ONLY MEANS OF DISCONNECTING POWER. IF NOT IN USE, FOR MOVING OR MAINTENANCE OF THE RADIATOR, SIMPLY REMOVE THE PLUG FROM THE SOCKET.

CAUTION:

This radiator is filled with a precise quantity of special oil. The repairs which require the opening of the radiator body (such as the loss of oil) must be made only by the manufacturer or service, which must be contacted in case of loss of oil.

DESCRIPTION OF PARTS



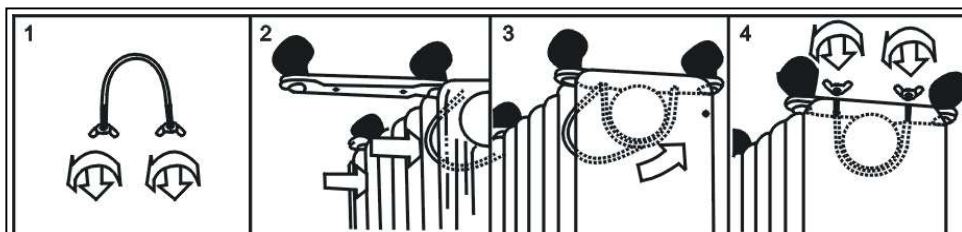
- 1. Element
- 2. Carry handle
- 3. Power indicator light
- 4. Power switch knob

- 5. Thermostat knob
- 6. Box for power cord hidden
- 7. Castor
- 8. Castor mounting plates

HOW TO INSTALL WHEELS

In the packaging the radiator has no wheels, which must be mounted before the commissioning of the device. Do not operate the heater without the wheels assemblies attached to the bottom of the unit. Otherwise there may be risk of fire.

- Loosen the nuts and washers from the wheels.
- Attach the wheels to the axle with two metal washer and nut.
- Turn over the radiator for easy assembly, make it sure that it's stable with no fall risk.
- Remove the nuts from the screws U (1) and insert the screws U-shaped through holes in the assembly of the wheel as shown (Fig. 2 and 3), hang up the wing nut and tighten firmly (fig. 4). Attention: do not over tighten, it may cause the damage of radiator flange.
- Repeat the same for mounting the wheels at the front and the back of the radiator.
- Return the device upright.



HOW TO USE THE RADIATOR

Choose a suitable place to position the radiator, considering the general safety warnings given in the first part of this manual. Only use this radiator in an upright position.

Set all controls to OFF position, insert the plug into the electrical socket, ensuring that voltage is compliant with that specified on the convector data plate.

Rotate the thermostat knob clockwise to MAX (maximum) position and select the desired heat level switching the heater as follows: I low heat – II medium heat – III high heat

Room temperature can be regulated by rotating the thermostat clockwise to increase or counter clockwise to decrease temperature.

When the room reaches the desired temperature, slowly rotate the thermostat knob counter clockwise until the power indicator light goes out, thermostat can be now left at this setting.

When the room temperature has dropped below the set temperature, automatically the radiator will switch itself until the room temperature will be reached again. In this way the room temperature remains constant with the most economical use of electricity.

If you want to change the room temperature setting, rotate the thermostat knob clockwise to raise the temperature, of counter clockwise to lower it.

This heater includes an overheat protection system that shuts off the heater when parts of heater are getting excessively hot.

HOW TO CLEAN THE RADIATOR

- Always unplug and leave the radiator to cool before cleaning.
- Use a damp cloth to clean the radiator exterior and remove dust. Leave the casing to dry before using the convector again.
- Do not immerse the heater into the water.
- Do not allow water to enter the radiator.
- Do not use benzene, solvents or abrasive compounds to clean the radiator, as these may damage the casing.
- Use a vacuum cleaner to remove dust from the air inlet/outlet grilles.
- Ensure that the radiator is dry before inserting the plug.
- Do not use metal tools to clean the convector radiator. Any metal fragments that may detach may come into contact with the panel's electrical components and cause a short-circuit.
- In the event of malfunctions or damages, always contact an authorised service centre.

STORAGE OF RADIATOR

If the radiator is not used for prolonged periods, it must be stored together with this manual in its original packaging, in a cool and dry place. Never put the appliance away when still hot. Wind the power cord and out it in the special cable box. Always wait for it to cool down.

INFORMATION REQUIREMENTS FOR ELECTRIC LOCAL SPACE HEATERS

Table 2 - Annex II - Ecodesign requirements - Requirements for product information -
COMMISSION REGULATION (EU) 2015/1188 of 28 April 2015 implementing Directive 2009/125/EC of the European Parliament and of the Council with regard to ecodesign requirements for local space heaters

Model identifier(s): WHISPER 9					
Item	Symbol	Value	unit	Item	unit
Heat output				Type of heat input, for electric storage local space heaters only (select one)	
Nominal heat output	P_{nom}	2.0	kW	manual heat charge control, with integrated thermostat	[no]
Minimum heat output (indicative)	P_{min}	0.8	kW	manual heat charge control with room and/or outdoor temperature feedback	[no]
Maximum continuous heat output	$P_{max,c}$	2.0	kW	electronic heat charge control with room and/or outdoor temperature feedback	[no]
Auxiliary electricity consumption				fan assisted heat output	
At nominal heat output	e_{lmax}	NA	kW	Type of heat output/room temperature control (select one)	
At minimum heat output	e_{lmin}	NA	kW	single stage heat output and no room temperature control	[no]
In standby mode	e_{lsb}	0	kW	Two or more manual stages, no room temperature control	[no]
				with mechanic thermostat room temperature control	[yes]
				with electronic room temperature control	[no]
				electronic room temperature control plus day timer	[no]
				electronic room temperature control plus week timer	[no]
				Other control options (multiple selections possible)	
				room temperature control, with presence detection	[no]
				room temperature control, with open window detection	[no]
				with distance control option	[no]
				with adaptive start control	[no]
				with working time limitation	[no]
				with black bulb sensor	[no]
Contact details :	ARGOCLIMA SPA - Via A. Varo,35 - Alfianello (BS) - ITALY - www.argoclima.com				

Model identifier(s): WHISPER 11						
Item	Symbol	Value	unit		Item	unit
Heat output					Type of heat input, for electric storage local space heaters only (select one)	
Nominal heat output	P _{nom}	2.5	kW		manual heat charge control, with integrated thermostat	[no]
Minimum heat output (indicative)	P _{min}	1.0	kW		manual heat charge control with room and/or outdoor temperature feedback	[no]
Maximum continuous heat output	P _{max,c}	2.5	kW		electronic heat charge control with room and/or outdoor temperature feedback	[no]
Auxiliary electricity consumption					fan assisted heat output	[no]
At nominal heat output	e _{lmax}	NA	kW		Type of heat output/room temperature control (select one)	
At minimum heat output	e _{lmin}	NA	kW		single stage heat output and no room temperature control	[no]
In standby mode	e _{lsb}	0	kW		Two or more manual stages, no room temperature control	[no]
					with mechanic thermostat room temperature control	[yes]
					with electronic room temperature control	[no]
					electronic room temperature control plus day timer	[no]
					electronic room temperature control plus week timer	[no]
					Other control options (multiple selections possible)	
					room temperature control, with presence detection	[no]
					room temperature control, with open window detection	[no]
					with distance control option	[no]
					with adaptive start control	[no]
					with working time limitation	[no]
					with black bulb sensor	[no]
Contact details :	ARGOCLIMA SPA - Via A. Varo,35 - Alfianello (BS) - ITALY - www.argoclima.com					



INFORMATION ON PROPER DISPOSAL OF THE APPLIANCE IN COMPLIANCE WITH EUROPEAN DIRECTIVE 2012/19/EU.

When this appliance reaches the end of its useful life, it must not be disposed of together with household waste but must be delivered to appropriate separate waste disposal plants or to dealers that provide similar service. Separate waste disposal of electrical and electronic appliances prevents possible negative effects on the environment and human health resulting from inadequate disposal, and also allows for recovering and recycling the materials comprising the appliances to ensure significant saving in terms of energy and resources. The separate disposal obligation is underlined by the crossed-out dustbin symbol appearing on the product. Illegal disposal of the product by the user shall determine the application of the administrative sanctions defined by the regulations in force.



improve your life

www.argoclima.com